

LEARN BID ANALYSIS

A Software for Technical & Commercial Tender Analysis

By :

Y.A. Agboatwala &

Fatima.Y. Agboatwala

1802, Jamuna Amrut,

219, Patel Estate, S.V.Road,

Jogeshwari(W), Mumbai - 400102

Phone: 09820792254 , (022) 26783525

Url: www.supercivilcd.com,

www.agboatwala.com

Email : yaa@supercivilcd.com,

yaa@agboatwala.com,

supercivilcd@gmail.com

LEARN BID ANALYSIS IN 8 EASY STEPS

A Software for Technical & Commercial
Analysis of Bids / Tenders

Introduction	● <u>INTRO & LIMITATION</u>
New Project (File) Creation	● <u>STEP NO. 1</u>
Add/Edit/Display Sections & Items	● <u>STEP NO. 2</u>
Edit / Display Bidder's Item Rates	● <u>STEP NO. 3</u>
Export & Import Bidder's File	● <u>STEP NO. 4</u>
Edit Settings	● <u>STEP NO. 5</u>
Bidder's Rating + Parameters	● <u>STEP NO. 6</u>
Reports : Part 1	● <u>STEP NO. 7</u>
Reports : Part 2 + Utilities	● <u>STEP NO. 8</u>

LEARN BID ANALYSIS STEP BY STEP

INTRO & LIMITATIONS

- Please take Print Out of Every Step, including this page before commencing Learn. **Take a Yellow Marker Pen and Mark the Learning Process while Proceeding further.** This is Essential for Learning. A Working example is also given on our web site. Down load the Working Example. Again Practice Software using working example.
- The software performs Technical & Commercial / Financial Bid Analysis of Tenders / Bids. The Software is General in Nature, however Sections & their Items displayed are from Building Construction Industry to serve as an Example. A User can delete all Sections & Add new Sections & corresponding Items as required. When a Section is deleted, Corresponding Items are Automatically deleted.
- The Bid Analysis based on Comparison of Standard Rates & that of Bidder's Rates of Items as indicated in the Tender. In order to perform Analysis the user / Client Shall have his own Rates & Quantities of Items worked out. The Cost thus worked out will be called Standard Tender Cost. The Purpose of this software is to Compare the Standard Tender Sectional & Item Costs with that of Bidder's Cost.
- A User has to Set the Parameters of Comparison by Using Settings Option.
- We have given Indicative Rates of All Items. It is Expected from the User to Enter appropriate Rates of required Items. Non used items can be deleted.
- There is no Limitations on number of Bidders.
- Exporting & Importing of Bidder's File are very Important Features of Bid Analysis. Instead of Filling the Rates of a Bidder by User (Client), the File Pertaining to the Bidder can be exported to Bidder by Email or by Storing in Bidder's Pen Drive. After Filling the Item Rates the Bidder can send his File by Email or in Pen Drive. Now Import the Bidders File & carry out Bid Analysis.
- Minimum Computer RAM memory of 1 GB is recommended.
- Use Laser OR Ink Jet Printer.

LEARN BID ANALYSIS STEP BY STEP

STEP NO. 1 : New Project (File) Creation

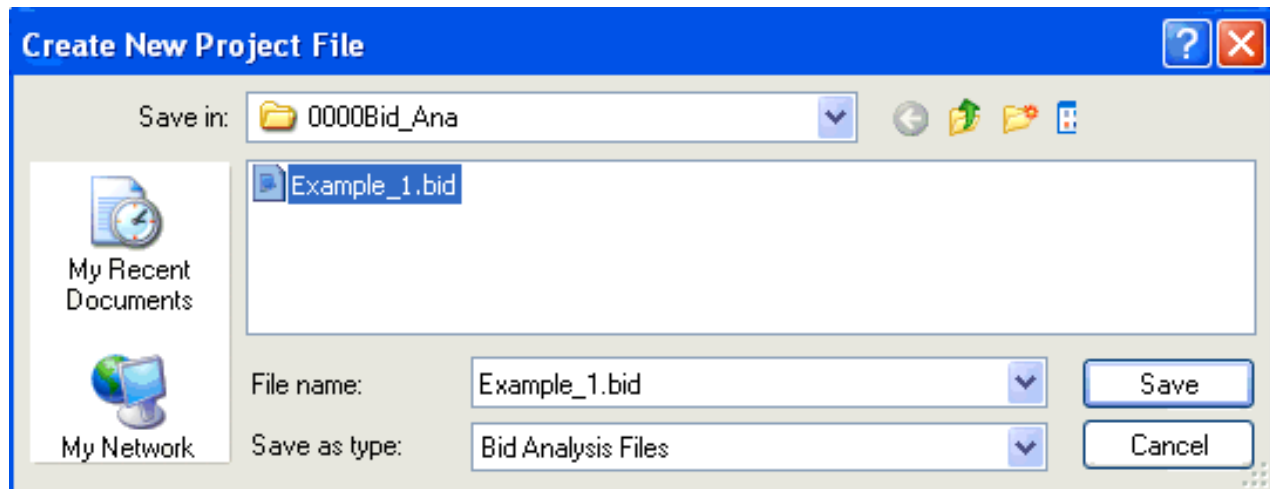
Files Add / Edit / Display Reports Utilities Learn

- When Program starts, the graphics above Menu Bar is displayed. Consider the " Files Option ".

Click the " Files " option in the MENU bar. The following window will open.

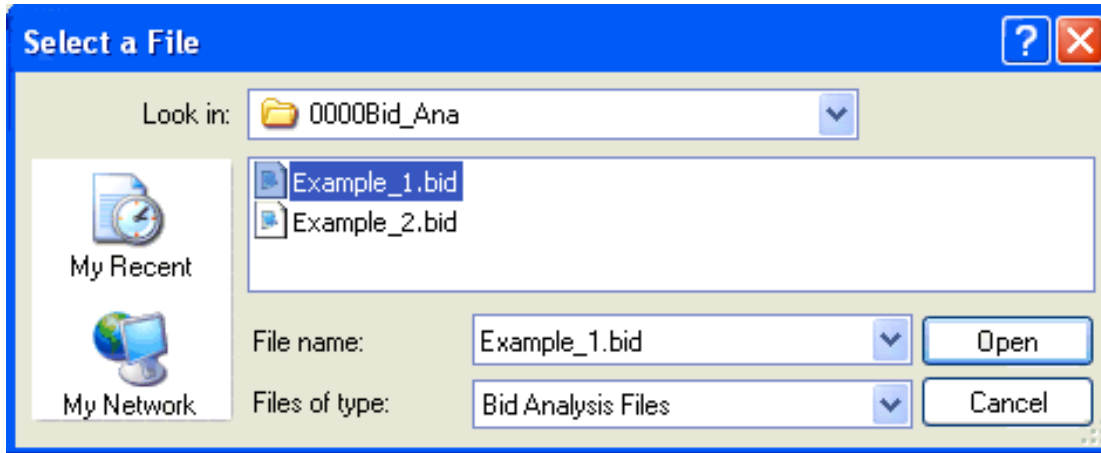


- You must create a separate Folder / Directory to store your files. I have created a Directory called " 0000Bid_Ana " in D drive to store my Project files. Click " Create New Project File " option. A Save Window Dialog Box will open up.



- Go to " 0000Bid_Ana " folder & give a file name to your project. I have given " Example_1 " as the name of my new project file. Click the save button. Following project window will open.

- **Enter Name of Bidders / Contractors.**
I have entered name of Bidders as shown above. Note that there is no Limit to number of Bidders.
Click OK Button to Complete File Creation.
- **Now click Edit Existing Project File button, following File Open Dialog window will appear.**



- **Select Example_1.bid and Click Open button, the Project window will open again. A user can edit all the Fields Except Total number of Bidders.**
Click the Next Page button, Bidders window will open again. A user can now change the Name of Bidder / Contractor. This option will come handy when file is to be exported to a Bidder for filling item rates. Change the name of other Bidder's to a nondescript name & thus camouflage his identity.

STEP NO. 1 IS OVER.

LEARN BID ANALYSIS STEP BY STEP

STEP NO. 2 : ADD/EDIT/DISPLAY SECTIONS & ITEMS

Files Add / Edit / Display Reports Utilities Learn

- When Program starts, the graphics above Menu Bar is displayed. Consider the " Files Option ".

Click the " Add / Edit / Display " option in the MENU bar. The following window will open.



- Click on " Sections " option. File Open Dialog window will appear. Now select " Example _1 File & Press Open Button. Following Graphics will be displayed.

ADD / EDIT / DELETE SECTIONS

Section / Group	Description
A	Preparatory Work
B	Earth Work / Anti Termite Treatment
C	Mortars
D	Plain Cement Concrete
E	Reinforced Cement Concrete
F	Brick Masonry Work
G	Stone Work
H	Marble Work
I	Wood Work
J	Door & Window Hardware
K	Structural Steel Work
L	Flooring and Skirting
M	Roofing/Terracing/Ceiling/RW Pipe
N	Finishing / Plastering / Pointing
P	Painting and Polishing
Q	Building Repairs
R	Dismantling & Demolishing
S	Miscellaneous Works
T	Road Work
U	Horticulture & Landscaping
V	Sanitary Installations
W	Water Supply
X	Drainage and Sewage
Y	Pile Work
Z	Water Proofing
1	Class A Materials
2	Class B Materials
3	Class C Materials

Edit Section / Group ID

Edit Description

Edit Record No. : 1

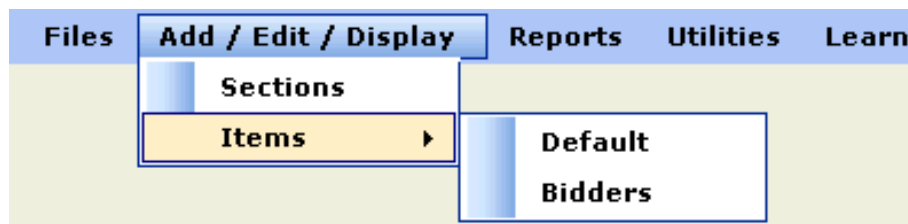
Paste Copy Prev Next

Read Me Last 1 st Copy All

Print Clear Go To Rec

Add Record Remove OK

- **A User can Delete all Sections & Add New Ones.**
We have given Default Sections usually used in Civil Engineering Construction. The material Sections shall be used, if Materials Supplied by Client OR Material required for Purchase are to be Compared / Analyzed."
Section Name Should not be repeated. Do not Repeat Description, to avoid Confusion.
- **Use Add Button to Append Record. Remove Button will delete the selected record. Copy Button will Copy the selected record & Paste Button will paste over the selected record. Copy All will copy the selected record to all the records. Prev, Next, Last & 1st buttons will select the Prev, Next, Last & 1st record respectively. Go to Rec button will take you the required record. Clear Button will clear all the written text. Read Me button will display salient feature of this option. Print button is for Hard Copy. OK button will save & exit this option.**
- **Assume that material is not supplied by client hence Delete Sections 1, 2 & 3. Click OK button and select Item option, following window will appear.**



- **Items Menu has 2 options. Click Default Option. Following Window will appear, after you have selected the Example_1 File.**

ADD / EDIT / DELETE DEFAULT ITEMS

Double Click Any Section

A : Preparatory Work
B : Earth Work / Anti Termite Treatment
C : Mortars
D : Plain Cement Concrete
E : Reinforced Cement Concrete
F : Brick Masonry Work
G : Stone Work
H : Marble Work
I : Wood Work
J : Door & Window Hardware
K : Structural Steel Work
L : Flooring and Skirting
M : Roofing/Terracing/Ceiling/RW Pipe
N : Finishing / Plastering / Pointing
P : Painting and Polishing
Q : Building Repairs
R : Dismantling & Demolishing
S : Miscellaneous Works
T : Road Work
U : Horticulture & Landscaping
V : Sanitary Installations
W : Water Supply
X : Drainage and Sewage
Y : Pile Work
Z : Water Proofing

- Displayed above are the List of Sections. Double click any section to display items pertaining to that section. Click on " Section A: Preparatory Works ". Item window corresponding to this section will be displayed as follows.

ADD / EDIT DEFAULT ITEMS, QTY AND RATE

A : Preparatory Work

File Name : D:\0000Bid_Ana\Example_1.bid

Date : 07 July 2009

Item #	Item	Unit	Quantity	Rate	Cost
A1	CLEARING OF JUNGLE	M2	500	4	2000
A2	CLEARING GRASS	M2		150	0
A3	FELLING TREES AVERAGE GIRTH ...	Nos		100	0
A4	FELLING TREES AVERAGE GIRTH ...	Nos		435	0
A5	FELLING TREES AVERAGE GIRTH ...	Nos		2010	0
A6	FELLING TREES AVERAGE GIRTH ...	Nos	10	4020	40200
A7	SURFACE DRESSING : SOFT / LOO...	M2		6.5	0
A8	SURFACE DRESSING : HARD / DEN...	M2		7.0	0
A9	BORING UP TO 6.0 M DEPTH	M		275	0
A10	BORING 6.0 M < DEPTH < 12.0 M	M		166	0
A11	BORING 12.0 M < DEPTH < 18.0 M	M		124	0
A12	PROVIDING AND PLACING FILTER	M		489	0
A13	G. I. PIPE FOR TUBEWELL	M		316	0
A14	PROVIDING AND PLACING HAND P...	Nos		850	0
A15	PLOUGHING EXISTING GROUND	M2		8.0	0
A16	HOLE EXCAVATION IN ALL TYPES ...	Nos		100	0
A17	HOLE EXCAVATION IN SOFT ROCK ...	Nos		152	0
A18	HOLE EXCAVATION IN SOFT ROCK ...	Nos		164	0
A19	HOLE EXCAVATION IN HARD ROCK...	Nos		197	0
A20	HOLE EXCAVATION IN HARD ROCK...	Nos		291	0
A21	SUPPLY AND ERECTION OF WATE...	Litre		7.0	0

Record No. : 1 of 22

Item No. Item Unit

Quantity Rate Total Cost of this Section :

- Enter the Quantities & Corresponding Rates of Items used in the Project. We have given Indicative Rates of All Items. These Quantities will serve as default Quantities for all Bidders.

Item Quantity x Rate = Cost. Summation of Cost of all items will serve as Default / Standard cost of this section, against whom the Bidder's sectional cost will be judged. I have added Quantity to Item A1 & A6 for the sake of Example.

We have displayed usual civil engineering items under respective sections. However a user can Delete all items & Add New Ones. Item number & description Should not be repeated.

All the item numbers, description & quantities will automatically appear in Bidders File.

Use Update button to Re-calculate Cost & save work.

Use " Qty = 0 " button to delete all records having zero quantities.

- Similarly Add Rates and Quantities of required Items in all Sections. Sections / Items, where items are having NIL quantities will have zero Cost.

STEP NO. 2 IS OVER.

LEARN BID ANALYSIS STEP BY STEP

STEP NO. 3 : Edit / Display Bidder's Item Rate

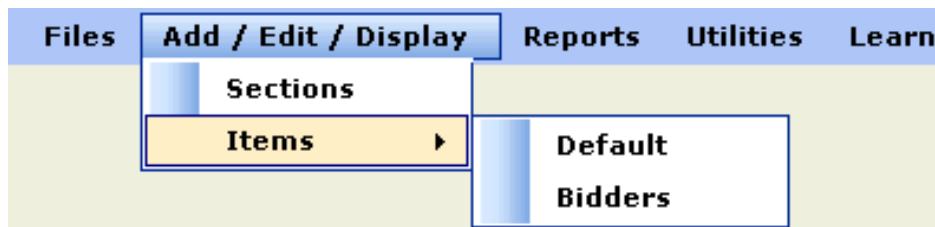
Files Add / Edit / Display Reports Utilities Learn

- When Program starts, the graphics above Menu Bar is displayed. Consider the " Files Option ".

Click the " Add / Edit / Display " option in the MENU bar. The following window will open.



- Select Item option, following window will appear.



- Items Menu has 2 options. Click Bidders Option. Following Window will appear, after you have selected the Example_1 File.

SELECT BIDDER : DOUBLE CLICK ANY OPTION

1 : Buid Tech
2 : General Constructions

- Click " 1. Build Tech " Option. Following Window will appear.

EDIT ITEM RATE

Double Click Any Section

A : Preparatory Work
B : Earth Work / Anti Termite Treatment
C : Mortars
D : Plain Cement Concrete
E : Reinforced Cement Concrete
F : Brick Masonry Work
G : Stone Work
H : Marble Work
I : Wood Work
J : Door & Window Hardware
K : Structural Steel Work
L : Flooring and Skirting
M : Roofing/Terracing/Ceiling/RW Pipe
N : Finishing / Plastering / Pointing
P : Painting and Polishing
Q : Building Repairs
R : Dismantling & Demolishing
S : Miscellaneous Works
T : Road Work
U : Horticulture & Landscaping
V : Sanitary Installations
W : Water Supply
X : Drainage and Sewage
Y : Pile Work
Z : Water Proofing

- Displayed above are the List of Sections. Double click any section to display items pertaining to that section. Click on " Section A: Preparatory Works ". Item window corresponding to this section will be displayed as follows.

ADD / EDIT RATE OF BIDDER

Item #	Item	Unit	Quantity	Rate	Cost
A1	CLEARING OF JUNGLE	M2	500	4.8	2400
A2	CLEARING GRASS	M2			0
A3	FELLING TREES AVERAGE GIRTH ...	Nos			0
A4	FELLING TREES AVERAGE GIRTH ...	Nos			0
A5	FELLING TREES AVERAGE GIRTH ...	Nos			0
A6	FELLING TREES AVERAGE GIRTH ...	Nos	10	4824	48240
A7	SURFACE DRESSING : SOFT / LOO...	M2			0
A8	SURFACE DRESSING : HARD / DEN...	M2			0
A9	BORING UP TO 6.0 M DEPTH	M			0
A10	BORING 6.0 M < DEPTH < 12.0 M	M			0
A11	BORING 12.0 M < DEPTH < 18.0 M	M			0
A12	PROVIDING AND PLACING FILTER	M			0
A13	G. I. PIPE FOR TUBEWELL	M			0
A14	PROVIDING AND PLACING HAND P...	Nos			0
A15	PLOUGHING EXISTING GROUND	M2			0
A16	HOLE EXCAVATION IN ALL TYPES ...	Nos			0
A17	HOLE EXCAVATION IN SOFT ROCK ...	Nos			0
A18	HOLE EXCAVATION IN SOFT ROCK ...	Nos			0
A19	HOLE EXCAVATION IN HARD ROCK...	Nos			0
A20	HOLE EXCAVATION IN HARD ROCK...	Nos			0
A21	SUPPLY AND ERECTION OF WATE...	Litre			0
A22	TEMPORARY FENCE CONSTRUCTION	M			0

Record No. : 1 of 22

Item No.	A1	Item	CLEARING OF JUNGLE	Unit	M2
Quantity	500	Rate	4.8	Total Cost of this Section : 50640	
Read Me		Prev	Next	Copy	Paste
Go To Rec		Print	Clear	OK	
Copy All		Update	Last	1 st	

- Enter the Rates of Items used in the Project. Usually We ask the Bidder to Fill in the Rates of all the Items irrespective of Quantity value. However it is prudent to ask the Bidder to fill rates of items where quantity is greater than zero. Bidder's Rates should include discount, rebate, installation, freight, delivery, taxes, duties & costs during maintenance period etc. All the item numbers, description & quantities cannot be edited/deleted from the Bidder's File.
- Item Quantity x Rate = Cost.
- Summation of Cost of all items will serve as Bidder's Cost of this section.
- This Sectional Cost will be Judged against the Standard Cost as explained in Step No. 2. I have added Quantity to Item A1 & A6 for the sake of Example.
- Use Update button to Re-calculate Cost & save work.
- Similarly Add Rates and Quantities of required Items in all Sections. Sections / Items, where items are having NIL quantities OR Rates will have zero Cost.
- Read Me button will display salient feature of this option. Print button is for Hard Copy. OK button will save & exit this option.

STEP NO. 3 IS OVER.

LEARN BID ANALYSIS STEP BY STEP

STEP NO. 4 : Export & Import Bidder's File

Files Add / Edit / Display Reports Utilities Learn

- When Program starts, the graphics above Menu Bar is displayed. Consider the " Files Option ".

Click the " Files " option in the MENU bar. The following window will open.



- Click Export Bidders File Option. Following Graphics is displayed.

A screenshot of a dialog box titled "EXPORT BIDDER'S FILE" in blue text. The dialog has a pink background. It contains four rows of controls. The first row has a button labeled "Default / STD. File" and a text box containing "D:\0000Bid_Ana\Example_1.bid". The second row has a button labeled "Bidder's File" and a text box containing "D:\Bidder_2\bidder_2.bid". The third row has a button labeled "Bidder Number" and a text box containing "2". The fourth row has a button labeled "Export Bidder's File" followed by three buttons labeled "Read Me", "Clear", and "Exit".

- **Exporting & Importing of Bidder's File are very Important Features of Bid Analysis.**

Instead of Filling the Rates of a Bidder by User (Client), the File Pertaining to the Bidder can be exported to Bidder by Email or by Storing in Bidder's Pen Drive. After Filling the Item Rates

the Bidder can send his File by Email or in Pen Drive. Now Client can Import the Bidders File & carry out Bid Analysis. There is no restriction on Number of Bidders.

It is assumed that Bidder is having **BID ANALYSIS** software installed in his computer.

While Exporting & Importing Bidder's File through Email, care should be taken to ZIP Files at both ends. Before sending Files to Bidders, camouflage the Names of other Contractors by using Edit Project File Option. In order to avoid any confusion, A user (Client) should Create Separate Folder / Directory for Exporting to and Importing from Each Bidder's Files. I have Created a separate folder called Bidder_2. The Name of Exported file is also called Bidder_2.

Delete Any Rates from Bidders File in Order to Avoid Giving any Hint to the Bidder.

- **Click Default / Std. File Button & select Example_1 File.
Click Bidder's File Button & Navigate to Bidder_2 Folder & Save Bidder's File Name as Bidder_2.**

Note that Bidder Number is 2. Now Click Export Bidder's File Button. Following Message is Displayed.



- **Copy these Bidder_2 Files to Bidders Pen drive or CD.
Let us assume that Bidder has brought his Bidder_2 files duly filled in with required item rates in Pen Drive or CD. Copy his files back to our Bidder_2 directory. As matter of Precaution delete all files from Bidder_2 Folder & then copy updated Bidder's Files.
Click Import Bidders File Option. Following Graphics is displayed.**

IMPORT BIDDER'S FILE

Default / STD. File	D:\0000Bid_Ana\Example_1.bid
Bidder's File	D:\Bidder_2\bidder_2.bid
Bidder Number	2
Import Bidder's File	<input type="button" value="Read Me"/> <input type="button" value="Clear"/> <input type="button" value="Exit"/>

- Follow the Procedure laid down during export option to Import the Bidder's File from the Bidder_2 Folder in to our main tender file Example_1 as shown above.
Read Me button will display salient feature of this option.

STEP NO. 4 IS OVER.

LEARN BID ANALYSIS STEP BY STEP

STEP NO. 5 : Edit Settings

Files Add / Edit / Display Reports Utilities Learn

- When Program starts, the graphics above Menu Bar is displayed. Consider the " Files Option ".

Click the " Files " option in the MENU bar. The following window will open.



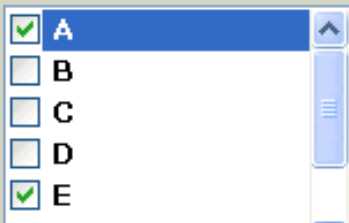
- Click Edit Settings Option.
Following Graphics is displayed.

SHOW FLAG / REPORT PARAMETER WHEN :

Flag : Cost of Section is > % of STD. Flag : Cost of Section is < % of STD.

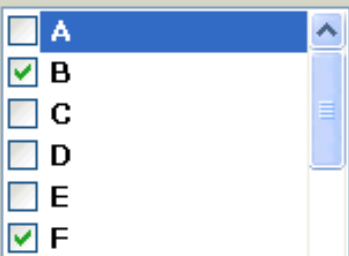
Flag : Cost of Item is > % of STD. Flag : Cost of Item is < % of STD.

Report : Cost of Following Sections Increased by % (For all Bidders)



(Double Click to Select)

Report : Cost of Following Sections Decreased by % (For all Bidders)



(Double Click to Select)

Read Me

Summary

O K

- This is the most interesting feature of software.
When Cost of a Section is > Mentioned limit a Flag Like ### will be Displayed in its Report.
When Cost of a Section is < Mentioned limit a Flag Like \$\$\$ will be Displayed in its Report.
When Cost of an Item is > Mentioned limit a Flag Like ### will be Displayed in its Report.
When Cost of an Item is < Mentioned limit a Flag Like \$\$\$ will be Displayed in its Report.
Cost of Selected Sections are Increased by Mentioned limit & Total Costs will be Displayed for All bidders.
Cost of Selected Sections are Decreased by Mentioned limit & Total Costs will be Displayed for All bidders.
- The accuracy of Standard Rate calculation is the Key to deciding above factors.
More accurate the Standard Rate, the Lesser shall be the Value of flags.
A Rate lower than say 25 % of Standard Rate will call for closer look at Bidders Rate.
Sometimes contractors quote a value less than the basic price of Materials by mistake or ignorance. Such Rates shall be brought to the notice of Contractor, else contractor may runaway leaving the work half done. There is nothing like free lunch.
A user may Use our **SUPER RATE ANALYSIS** software to identify such rates.
Sometimes smart contractors quote lesser rate for a particular item, assuming that the quantities of such items will increase during construction and quote very high rate for lesser quantity items. Hence Options for Selected Increase or Decrease of Sectional Cost is given to identify such Bidders.
Read Me button will display salient feature of this option.
- Summary Option displays the Selected Settings. Click Summary Option.
Following Graphics is displayed.

File Name : D:\0000Bid_Ana\Example_1.bid

Date : 09 July 2009

Flag If Cost of Section is Increased by 10 %

Flag If Cost of Section is Decreased by 20 %

Flag If Cost of Item is Increased by 15 %

Flag If Cost of Item is Decreased by 25 %

Report If Cost of Following Sections are Increased by 25 %

Section A

Section E

Report If Cost of Following Sections are Decreased by 15 %

Section B

Section F

STEP NO. 5 IS OVER.

LEARN BID ANALYSIS STEP BY STEP

STEP NO. 6 : Bidder's Rating + Parameters

Files Add / Edit / Display Reports Utilities Learn

- When Program starts, the graphics above Menu Bar is displayed. Consider the " Files Option ".

Click the " Files " option in the MENU bar. The following window will open.



- Click Bidders Rating + Parameters Option. Select File Name (Example_1) and then Select Bidder no. 1 : Build Tech. Following Graphics is displayed.

{ A } Rating Parameters : Give Values - Total not to Exceed 100

1. ISO 9000 Certification/Implementation	<input type="text" value="5"/>	2. Technical Capability	<input type="text" value="5"/>
3. Financial Capability	<input type="text" value="5"/>	4. Managerial Competence	<input type="text" value="5"/>
5. Commitment to Schedule	<input type="text" value="5"/>	6. After sales Service	<input type="text" value="5"/>
7. Market Information	<input type="text" value="5"/>	8. Relationship with Company	<input type="text" value="5"/>
9. Credit Terms	<input type="text" value="5"/>	10. Experience of Similar Job	<input type="text" value="5"/>
11. Employee Training	<input type="text" value="5"/>	12. Disposition to Suggestions	<input type="text" value="5"/>

{ B } Financial Parameters

13. Business Registration/License No.	<input type="text" value="1234"/>	14. Date of Registration	<input type="text" value="12/12/2000"/>
15. Tax paid in Last Financial Year	<input type="text" value="40000"/>	16. Ave. Turnover of Last 3 Yrs.	<input type="text" value="1200000"/>
17. Average Net Profit of Last 3 Years	<input type="text" value="100000"/>	18. I. T. clearance certificate Submitted	<input type="text" value="Y"/>

{ C } Basic Labour Costing Parameters

19. Skilled Labour Rate / Day	<input type="text" value="250"/>	20. Un-Skilled Labour (M) Rate	<input type="text" value="180"/>
21. Un-Skilled Labour (F) Rate / Day	<input type="text" value="150"/>		

{ D } Basic Material Costing Parameters

22. Cement Rate / Bag	<input type="text" value="250"/>	23. Sand Rate / M3	<input type="text" value="600"/>
24. Aggregate Rate / M3	<input type="text" value="700"/>	25. Brick Rate / No.	<input type="text" value="2.5"/>
26. Reinforcement Rate / Ton	<input type="text" value="50000"/>	27. Aluminum Rate / Kg	<input type="text" value="180"/>

{ E } Equipment Schedule at Site

28. No. of Mixers	<input type="text" value="3"/>	29. No. of Vibrators	<input type="text" value="8"/>
30. Shuttering in M2	<input type="text" value="3000"/>	31. No. of Trucks + Dumpers	<input type="text" value="4"/>
32. No. of Welding Machines	<input type="text" value="6"/>	33. No. of Cranes + Winches	<input type="text" value="4"/>
34. No. of Shovels / Bulldozers	<input type="text" value="1"/>	35. No. of Pumps + Compressors	<input type="text" value="4"/>
36. No. of Testing Equipments	<input type="text" value="5"/>	37. No. of Computers	<input type="text" value="6"/>

{ F } Proposed Site Organization

38. No. of Senior Site Engineers	<input type="text" value="1"/>	39. No. of Junior Site Engineers	<input type="text" value="3"/>
40. No. of QS	<input type="text" value="1"/>	41. No. of Site Supervisors	<input type="text" value="6"/>
42. No. of Accounting Staff	<input type="text" value="3"/>	43. No. of Security Personnel	<input type="text" value="6"/>
44. No. of Store Keepers	<input type="text" value="2"/>	45. No. of Draughtsman	<input type="text" value="1"/>

{ G } Average Schedule of Labour Strength at Site

46. No. of Skilled Labours	<input type="text" value="100"/>	47. No. of Un-Skilled Labours - M	<input type="text" value="100"/>
48. No. of Un-Skilled Labours - Female	<input type="text" value="100"/>		

File Name : D:\0000Bid_Ana\Example_1.bid

Date : 08 July 2009

Read Me

OK

Bidder : 1 : Buid Tech

- Bidder's Parameter Ratings are basically subjective in nature. In order to reduce pure subjectivity, we have added various other parameters to make it somewhat objective. Total Rating Marks given to a shall not > 100.0. A Healthy Financial Parameters reflect Financial Capability & Competence of its Top Management. Basic Labor & Material rates at site reflects Contractors understanding of Site Conditions. A extremely high or Low rate may indicate that contractor has not visited the site & got acquainted with its conditions. Basic Labor & Material Rates are also helpful in Rate Analysis & in deciding Day Works (extra item) Rates. Equipment Schedule, Supervisory & Labor Strength at site Reflects resourcefulness & Commitment of contractor to Schedule as well as to QA / QC. The average labor strength at site shall be collaborated with the Bar Chart of project produced by the Contractor. [Refer our QTY software.](#) Read Me button will display salient feature of this option.

STEP NO. 5 IS OVER.

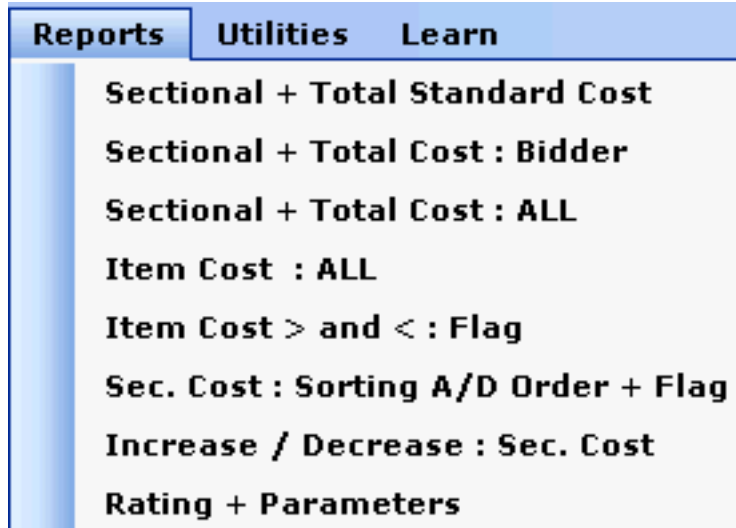
LEARN BID ANALYSIS STEP BY STEP

STEP NO. 7 : Reports - Part 1

Files Add / Edit / Display Reports Utilities Learn

- When Program starts, the graphics above Menu Bar is displayed. Consider the " Reports Option ".

Click the " Reports " option in the MENU bar. The following window will open.



- There are 8 Report options & all are having different flavor. A user can print the Report directly or Copy the Text & Paste it to any Word Editor, whenever the Button is displayed. Click " Sectional + Total Standard Cost ". Sectional Cost & Total Standard Tender Cost will be displayed after Example_1 File is Selected. Following Report is a Part Display.

Sectional and Total Cost of Standard Tender

File Name : D:\0000Bid_Ana\Example_1.bid

Date : 08 July 2009

Organization : ABC Ltd.

Nature of Work (1) : Admin Building.

Nature of Work (2) : Water Tank.

Nature of Work (3) : Pump House.

Nature of Work (4) : Garden + Compound Wall + GF Slab.

Project No. : 8912

Building ID : Wing A

Total Builtup Area of Building in sft : 20000

Commencement Date : 2/7/2009

Expected Completion Date : 2/7/2009

Expected Estimated Cost : 45000000 (At Feasibility Stage)

Expected Cost in Rs/sft : 2250

Person Responsible : Shri R R Mistry

Designation : Project Manager

Consultants Name : Super Civil CD

Consultants Representative : Shri Y A Agboatwala

Total Cost of Section A : Preparatory Work = 42200

Total Cost of Section B : Earth Work / Anti Termite Treatment = 143300

Total Cost of Section C : Mortars = 56600

Total Cost of Section D : Plain Cement Concrete = 256860

Total Cost of Section E : Reinforced Cement Concrete = 757310

Total Cost of Section M : Roofing/Terracing/Ceiling/RW Pipe = 1370728.5

Total Cost of Section N : Finishing / Plastering / Pointing = 1262181.84

Total Cost of Section P : Painting and Polishing = 4116834.06

Total Cost of Section Q : Building Repairs = 1203525

Total Cost of Section R : Dismantling & Demolishing = 596799

Total Cost of Section S : Miscellaneous Works = 10507029

Total Cost of Section T : Road Work = 8902942.38

Total Cost of Section U : Horticulture & Landscaping = 5126.75

Total Cost of Section V : Sanitary Installations = 1993160

Total Cost of Section W : Water Supply = 23500

Total Cost of Section X : Drainage and Sewage = 31255

Total Cost of Section Z : Water Proofing = 861011.2

Total Cost of Standard BID = 47819559.15

Expected Estimated Cost : 45000000 (At Feasibility Stage)

Estimated Cost is Less than Tender Cost by 6.27 %

Tender Cost in Rs/sft = 2390.98

- If a user clicks " Sectional + Total Cost : Bidder ", Individual Sectional & Total Cost of Selected Bidder will be displayed. Basically this Option is for Bidder, to whom the Client has Exported the Tender File for Adding Item Rates. Bidder can find out the Tender Cost after adding Rates to all Items bearing quantities.
If a user clicks " Sectional + Total Cost : ALL " Option, Individual Sectional & Total Cost of All Bidders along with Standard Costs will be displayed. Part Report is Displayed as under.

Total Cost of Standard Section T : Road Work = 8902942.38

Total Sectional Cost of Section T For Bidder no. 1 = 9297127.75 { Bidder Cost is > 4.43 % }

Total Sectional Cost of Section T For Bidder no. 2 = 10096652.5 { Bidder Cost is > 13.41 % }

Total Cost of Standard Section U : Horticulture & Landscaping = 5126.75

Total Sectional Cost of Section U For Bidder no. 1 = 7177.45 { Bidder Cost is > 40 % }

Total Sectional Cost of Section U For Bidder no. 2 = 4562.81 { Bidder Cost is < 11 % }

Total Cost of Standard Section V : Sanitary Installations = 1993160

Total Sectional Cost of Section V For Bidder no. 1 = 2021900 { Bidder Cost is > 1.44 % }

Total Sectional Cost of Section V For Bidder no. 2 = 1827505 { Bidder Cost is < 8.31 % }

Total Cost of Standard Section W : Water Supply = 23500

Total Sectional Cost of Section W For Bidder no. 1 = 25000 { Bidder Cost is > 6.38 % }

Total Sectional Cost of Section W For Bidder no. 2 = 28900 { Bidder Cost is > 22.98 % }

Total Cost of Standard Section X : Drainage and Sewage = 31255

Total Sectional Cost of Section X For Bidder no. 1 = 35250 { Bidder Cost is > 12.78 % }

Total Sectional Cost of Section X For Bidder no. 2 = 35250 { Bidder Cost is > 12.78 % }

Total Cost of Standard Section Z : Water Proofing = 861011.2

Total Sectional Cost of Section Z For Bidder no. 1 = 739931.5 { Bidder Cost is < 14.06 % }

Total Sectional Cost of Section Z For Bidder no. 2 = 1210797 { Bidder Cost is > 40.62 % }

Total Cost of Standard Tender = 47819559.15

Total Cost of Tender For Bidder no. 1 = 50052237.95 { Bidder Cost is > 4.67 % }

Total Cost of Tender For Bidder no. 2 = 47139742.04 { Bidder Cost is < 1.42 % }

Bidder no. 1 is Buid Tech

Bidder no. 2 is General Constructions

- If a user clicks " Item Cost : ALL ", Option, Individual Item Cost of Selected Bidder along with Standard Item Cost will be displayed.
If a user clicks " Item Cost > and < : Flag " Option, Individual Item Cost of Selected Bidder along with Standard Item Costs will be displayed as per Flag Indicated in " Settings " Option.
Part Report is Displayed as under.

Item Cost Comparison Between Standard Tender & Bidder no. 1

: Item Cost Greater than 15 % of STD.

\$\$\$: Item Cost Less than 25 % of STD.

Item No. A1 : CLEARING OF JUNGLE

Standard Cost of Item No. A1 = 2000

Cost of Item No. A1 For Bidder no. 1 = 2400 : ####

Item No. C10 : CEMENT MORTAR 1:4

Standard Cost of Item No. C10 = 56600

Cost of Item No. C10 For Bidder no. 1 = 65090 : ####

Item No. D2 : PCC 1 : 1.5 : 3 UP TO PLIINTH LEVEL

Standard Cost of Item No. D2 = 212000

Cost of Item No. D2 For Bidder no. 1 = 159000 : \$\$\$

Item No. D13 : PCC 1 : 1.5 : 3 III SUPER STRUCTURE

Standard Cost of Item No. D13 = 44860

Cost of Item No. D13 For Bidder no. 1 = 33645 : \$\$\$

Item No. E2 : RCC 1 : 1.5 : 3 UP TO PLIINTH LEVEL

Standard Cost of Item No. E2 = 323550

Cost of Item No. E2 For Bidder no. 1 = 375000 : ####

Item No. F1 : BRICK WORK III CM 1:6 UP TO PLIINTH

Standard Cost of Item No. F1 = 84210

Cost of Item No. F1 For Bidder no. 1 = 105000 : ####

Item No. G1 : RANDOM RUBBLE MASONRY III CM 1:6 UP TO PLIINTH

Standard Cost of Item No. G1 = 669600

Cost of Item No. G1 For Bidder no. 1 = 900000 : ####

Item No. L37 : GLAZED TILE FLOORING

Standard Cost of Item No. L37 = 1565329.42

Cost of Item No. L37 For Bidder no. 1 = 1999995 : ####

Item No. P28 : PLASTIC EMULSION PAINT

Standard Cost of Item No. P28 = 152903.54

Cost of Item No. P28 For Bidder no. 1 = 199439.4 : ####

STEP NO. 7 IS OVER.

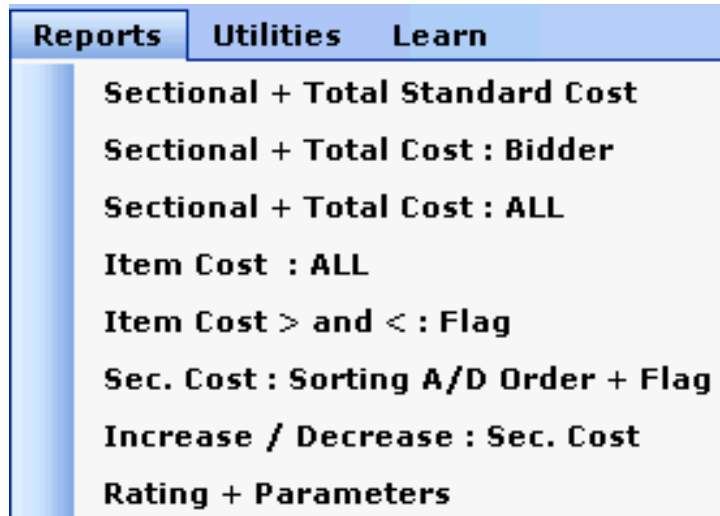
LEARN BID ANALYSIS STEP BY STEP

STEP NO. 8 : Reports - Part 2



- When Program starts, the graphics above Menu Bar is displayed. Consider the " Reports Option ".

Click the " Reports " option in the MENU bar. The following window will open.



- There are 8 Report options & all are having different flavor. A user can print the Report directly or Copy the Text & Paste it to any Word Editor, whenever the Button is displayed. Click " Sec. Cost : Sorting A/D Order + Flag ". Standard Sectional & Total Cost along with all Bidder's Sectional & Total Cost will be Displayed after Example_1 File is Selected. The Flag shown is as per Settings Option. Click Column Headers to Sort Sectional Cost & Total Cost in Ascending or Descending Order. Following Report is a Part Display.

DISPLAYING COSTS IN A/D ORDER + FLAG

Cost Greater than 10 % of STD.

\$\$\$ Cost Less than 20 % of STD.

Bidder #	Bidder's Name	Section	Cost	Remark
0	Standard	A	42200	
1	Buid Tech	A	50640	###
2	General Constructions	A	40750	
0	Standard	B	143300	
1	Buid Tech	B	114640	\$\$\$
2	General Constructions	B	163000	###
0	Standard	C	56600	
1	Buid Tech	C	65090	###
2	General Constructions	C	65000	###
0	Standard	D	256860	
1	Buid Tech	D	192645	\$\$\$
2	General Constructions	D	235250	
0	Standard	E	757310	
1	Buid Tech	E	858000	###
2	General Constructions	E	892525	###
0	Standard	F	348410	
1	Buid Tech	F	305000	
2	General Constructions	F	332175	
0	Standard	G	669600	
1	Buid Tech	G	900000	###
2	General Constructions	G	700500	
0	Standard	H	84152	
1	Buid Tech	H	90000	

Bidder no. 1 is Buid Tech

Bidder no. 2 is General Constructions

- If a user clicks " Increase / Decrease : Sec Cost " Option, Sectional & Total Cost of All Bidders as well as Standard Costs will Increase or Decrease as indicated in settings.
Part Report is Displayed as under.

INCREASE / DECREASE IN SECTIONAL COSTS AS PER SETTINGS

Increase in Sec. Costs by 25 % of STD.

Decrease in Sec. Costs by 15 % of STD.

Bidder #	Bidder's Name	Section	Cost
1	Buid Tech	S	10507029
2	General Constructions	S	9704689.35
0	Standard	T	8902942.38
1	Buid Tech	T	9297127.75
2	General Constructions	T	10096652.5
0	Standard	U	5126.75
1	Buid Tech	U	7177.45
2	General Constructions	U	4562.81
0	Standard	V	1993160
1	Buid Tech	V	2021900
2	General Constructions	V	1827505
0	Standard	W	23500
1	Buid Tech	W	25000
2	General Constructions	W	28900
0	Standard	X	31255
1	Buid Tech	X	35250
2	General Constructions	X	35250
0	Standard	Z	861011.2
1	Buid Tech	Z	739931.5
2	General Constructions	Z	1210797
0	Standard	ALL	47945680.15
1	Buid Tech	ALL	50216451.95
2	General Constructions	ALL	47298784.54

Bidder no. 1 is Buid Tech
 Bidder no. 2 is General Constructions

- The Last Reporting Display is for " Rating + Parameter " Option. Part Report is Displayed as under.

Bidders Rating Parameters

- < Bidder No 1 > ISO 9000 Certification/Implementation : 15
- < Bidder No 2 > ISO 9000 Certification/Implementation : 0
- < Bidder No 1 > Technical Capability : 10
- < Bidder No 2 > Technical Capability : 20
- < Bidder No 1 > Financial Capability : 5
- < Bidder No 2 > Financial Capability : 5
- < Bidder No 1 > Managerial Competence : 10

< Bidder No 1 > No. of Senior Site Engineers : 1
< Bidder No 2 > No. of Senior Site Engineers : 1
< Bidder No 1 > No. of Junior Site Engineers : 3
< Bidder No 2 > No. of Junior Site Engineers : 3
< Bidder No 1 > No. of QS : 1
< Bidder No 2 > No. of QS : 1
< Bidder No 1 > No. of Site Supervisors : 6
< Bidder No 2 > No. of Site Supervisors : 3
< Bidder No 1 > No. of Accounting Staff : 3
< Bidder No 2 > No. of Accounting Staff : 2
< Bidder No 1 > No. of Security Personnel : 6
< Bidder No 2 > No. of Security Personnel : 4
< Bidder No 1 > No. of Store Keepers : 2
< Bidder No 2 > No. of Store Keepers : 1
< Bidder No 1 > No. of Draughtsman : 1
< Bidder No 2 > No. of Draughtsman : 0
< Bidder No 1 > No. of Skilled Labours : 100
< Bidder No 2 > No. of Skilled Labours : 75
< Bidder No 1 > No. of Un-Skilled Labours - Male : 100
< Bidder No 2 > No. of Un-Skilled Labours - Male : 70
< Bidder No 1 > No. of Un-Skilled Labours - Female : 100
< Bidder No 2 > No. of Un-Skilled Labours - Female : 90

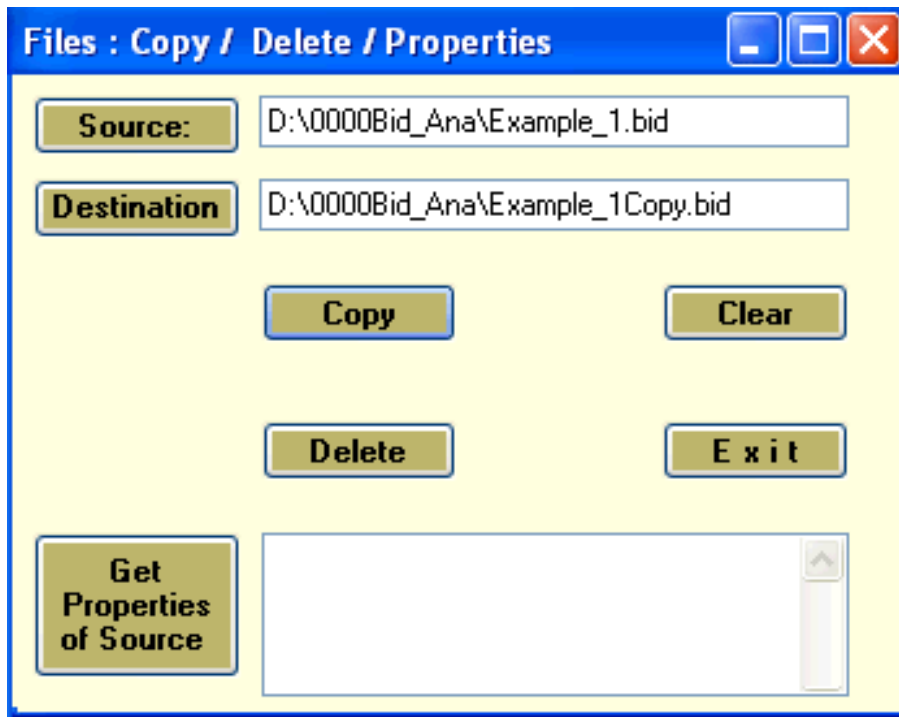
Bidders Rating :

< Bidder No 1 > Rating : 80
< Bidder No 2 > Rating : 64

Bidder no. 1 is Buid Tech

Bidder no. 2 is General Constructions

- **Click Utilities Option. Following Window Opens up. This option is for Copying & Deleting of Bid Analysis Files. Indicate Source & Destination File for Copying & Indicate only Source File for Deleting all Bid Analysis Files. In Order to view properties of a File, Browse for the file name by clicking on "Source" button. Click on "Get Properties of Source" button**



STEP NO. 8 IS OVER.

OTHER SOFTWARES:

SUPER CIVIL CD - Single Point Solution To Your Civil Engineering Needs

SUPER RATE ANALYSIS - Rate Analysis Of 1299 Nos. Of Civil Engineering Items

2D FRAME ANALYSIS - Discover The Beauty Of Structural Analysis

R C F - A Software for Analysis, Design, Estimation & Costing of RCC Floors

S S F - Analysis, Design, Estimation & Costing of Steel Buildings, revised as per IS 800 : 2007

Q T Y - Quantity Estimation & Cost, Project Control

SUPER REAL VALUATION - A Software For Immovable Properties

ROADS - Pavement Design & Rate Analysis Of Road Items

ROAD ESTIMATE - Quantity Estimation & Cost, Project Control For Road

ELECTRIC COST - Costing, Project Control & MDS For Electrical Projects

HVAC COST - Costing, Project Control & Design For HVAC Engineers

BILLING JI - A Database Management Software For General Billing

RA BILL - A Database Management Software For Item Rate Contract Billing

BUILDERS BILL - A Database Management Software for Billing of Lump sum Contracts

RAFT FOUNDATION - Analysis, Design, Estimation, Costing & Drawing of RCC Raft Foundation

STEEL_2007 - Limit State design of Steel as per IS 800 : 2007

SITE CONTROL - A Management Software for Resource Control At Site.

DESIGN & DRAWING CONTROL - A DBM Software for Control of Design & Drawing Manhours.

COMPOSITE - A Software for Analysis, Design, Costing & Drawing of Composite Floor Buildings

INSTA COST - A Software for Estimating Project Cost & Tender SOQ Instantly

FLAT SLAB - A Software for Analysis, Design, Estimation, Costing & Drawings of Flat Slabs

FLAT RAFT - A Software for Analysis, Design, Estimation, Costing & Drawings of Rigid RCC Flat Rafts

OPTIMIZE BAR - A Software for Optimization of Reinforcements from Existing Bar Bending Schedule

OPTIMIZE STEEL - A Software for Optimization of Steel Sections from Existing Fabrication Drawing

AutoQty - A Software for Automatic Quantity & Cost Estimation from AutoCAD Drawings