

# LEARN HVAC COST

A Costing & Planning Software  
for HVAC Engineers

By :

Y.A. Agboatwala &

Fatima.Y. Agboatwala

1802, Jamuna Amrut,

219, Patel Estate, S.V.Road,

Jogeshwari(W), Mumbai - 400102

Phone: 09820792254 , (022) 26783525

Url: [www.supercivilcd.com](http://www.supercivilcd.com),

[www.agboatwala.com](http://www.agboatwala.com)

Email : [yaa@supercivilcd.com](mailto:yaa@supercivilcd.com),

[yaa@agboatwala.com](mailto:yaa@agboatwala.com),

[supercivilcd@gmail.com](mailto:supercivilcd@gmail.com)

# LEARN HVAC COST

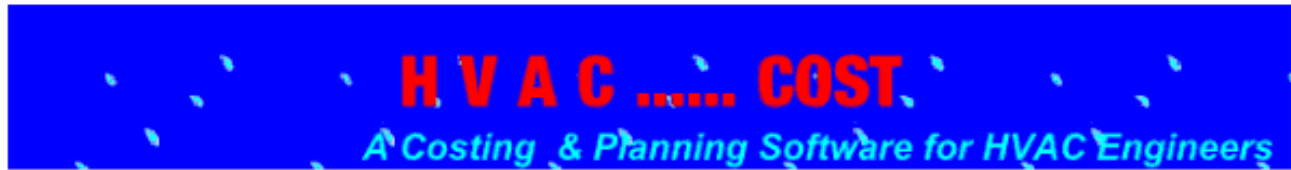
<b>Create New File</b>	● <a href="#"><u>STEP NO. 1</u></a>
<b>Add / Edit Item Rates</b>	● <a href="#"><u>STEP NO. 2</u></a>
<b>Add / Edit Quantities</b>	● <a href="#"><u>STEP NO. 3</u></a>
<b>Sectionwise Quantities/Costs</b>	● <a href="#"><u>STEP NO. 4</u></a>
<b>Total Cost</b>	● <a href="#"><u>STEP NO. 5</u></a>
<b>Sectional Labour Consumption</b>	● <a href="#"><u>STEP NO. 6</u></a>
<b>Total Labour Consumption</b>	● <a href="#"><u>STEP NO. 7</u></a>
<b>Display Pie / Bar Charts</b>	● <a href="#"><u>STEP NO. 8</u></a>
<b>Other Programs</b>	● <a href="#"><u>STEP NO. 9</u></a>
<b>Typical Forms/Formats/Data Sheet</b>	● <a href="#"><u>STEP NO. 10</u></a>
<b>Copy, Delete, Edit &amp; Export to Excel</b>	● <a href="#"><u>STEP NO. 11</u></a>
<b>Monthly Cash Flow, Material, men, Consumption &amp; S Curve</b>	● <a href="#"><u>STEP NO. 12</u></a>

● The other menu options i.e. Excel Sheet & Fundamentals are self explanatory.

# LEARN HVAC COST STEP BY STEP

## STEP NO. 1

Read\_Me Files Edit\_Items\_Rates Add\_Edit\_Quantities Summary Graphics { Programs\_1 Program\_2 Funda Excel Sh. Forms\_1 Forms\_2 }



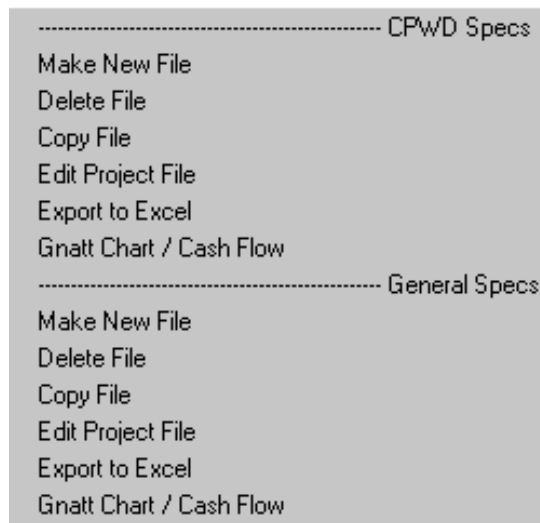
**BY: Y. A. Agboatwala  
B. E. (Civil), MIE, DBA, FIV**

▶ When Program starts, the graphics above is displayed. The Menu bar contains following options.

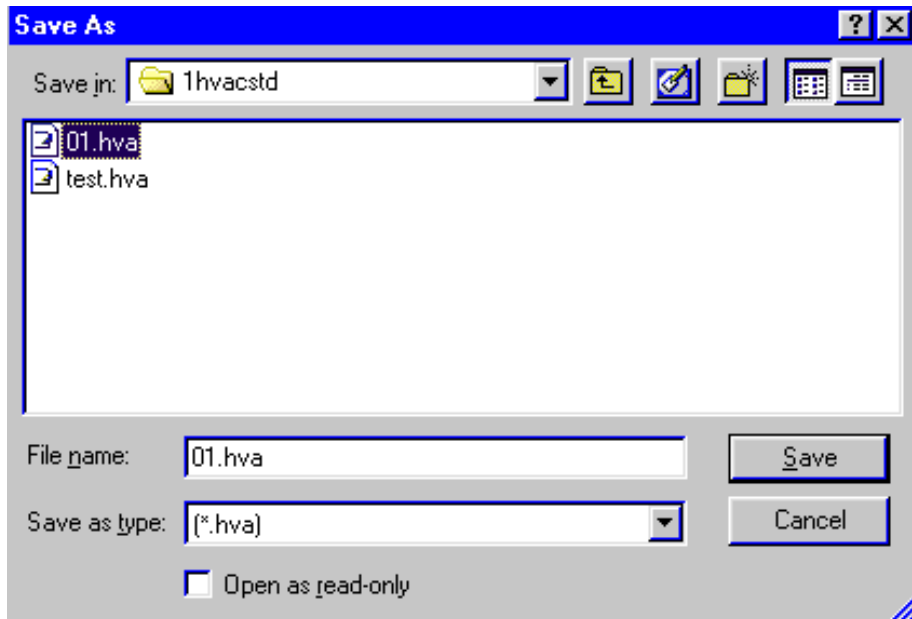
- I. Read Me
- II. Files
- III. Edit Item Rates
- IV. Add, Edit Quantities
- V. Summary
- VI. Graphics
- ..... Additional Programs / Info.
- VII. Programs\_1
- II X. Programs\_2
- IX. Funda
- X. Excel Sheets
- XI. Forms\_1
- XII. Forms\_2

Click the FILES option in the MENU bar. The following window will open.  
Note that all the options under the FILES i.e. CPWD Specs and General Specifications are similar in operation.

▶ *We will consider General Specs option only for demonstration purpose.*



- ▶ Now click "Make New File" option. The following window will open. You must create a separate Folder / Directory to store your files. I have created a Directory called " 1hvacstd " in C drive to store my General Spec files. Now go to this folder & give a file name to your project. I have given " 01 " as the name of my new project file. Click the save button.



- ▶ When you click the save button, following project window will open.

**Project File : Add Project Details** [X]

File Name : C:\1hvacstd\01.hva Date : 14/5/07

Organization :

Project :

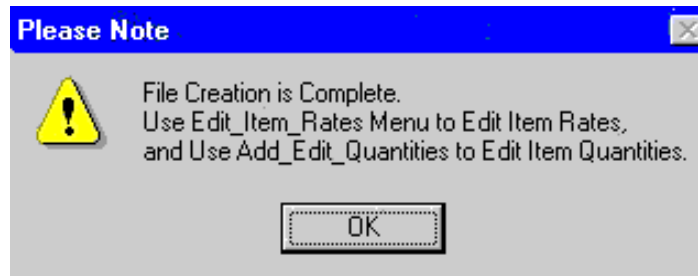
Project No :

Client ID :

Building / Structure ID :

Project Duration in Months :	<input type="text" value="24"/>	Project Over Head in %	<input type="text" value="10"/>
Taxes in %	<input type="text" value="4"/>	Profit Margin in %	<input type="text" value="10"/>
Skill labour Wage / day	<input type="text" value="250"/>	Un Skilled Labour Wage	<input type="text" value="180"/>
Foreman Cost / day	<input type="text" value="350"/>	Mobilization Advance in %	<input type="text" value="10"/>
Recovery of Advance in %	<input type="text" value="10"/>	Security Deposit in %	<input type="text" value="10"/>

- ▶ The window requires various project details. Whatever values you will fill here will serve as default values for the project. I have filled up the above values as required by my new project " 01 ". You can change these values now OR later by clicking "Edit Project File" option in File Menu. Now click the OK button, following window will appear.



- ▶ Click OK button. Now project File creation is complete. The above window gives the following two vital information.
  1. Use " Edit Item Rates " Menu to add / Edit Rates of various Items &
  2. Use " Add Edit Quantities " Menu to add / Edit Quantities of various Items.

**STEP NO. 1 IS OVER.**

# LEARN HVAC COST STEP BY STEP

## STEP NO. 2

Read\_Me Files Edit\_Items\_Rates Add\_Edit\_Quantities Summary Graphics { Programs\_1 Program\_2 Funda Excel Sh. Forms\_1 Forms\_2 }



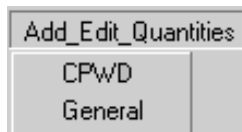
**BY: Y. A. Agboatwala**  
**B. E. (Civil), MIE, DBA, FIV**

▶ When Program starts, the graphics above is displayed. The Menu bar contains following options.

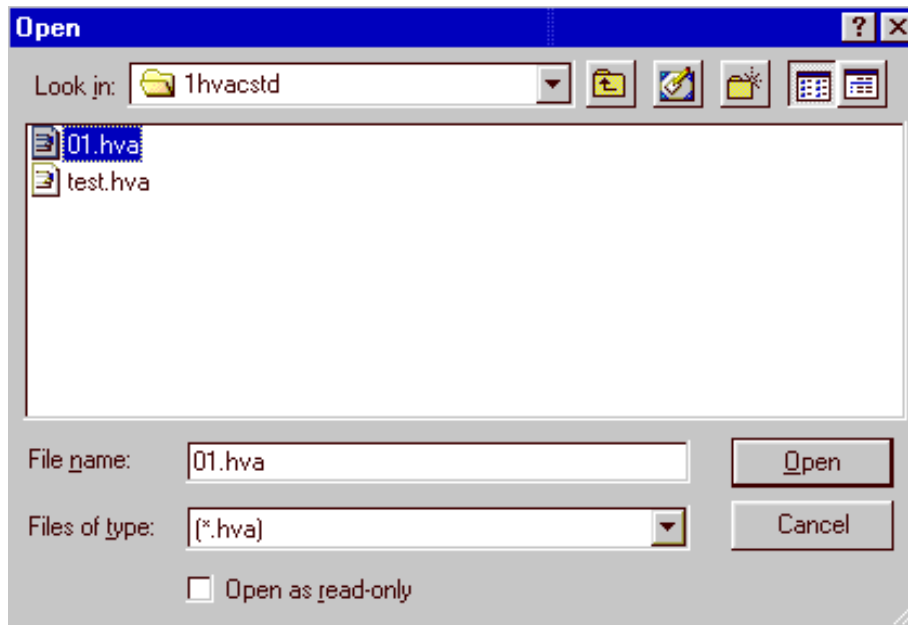
- I. Read Me
- II. Files
- III. Edit Item Rates
- IV. Add, Edit Quantities
- V. Summary
- VI. Graphics
- ..... Additional Programs / Info.
- VII. Programs\_1
- II X. Programs\_2
- IX. Funda
- X. Excel Sheets
- XI. Forms\_1
- XII. Forms\_2

Click the " Edit Item Rates " option in the MENU bar.

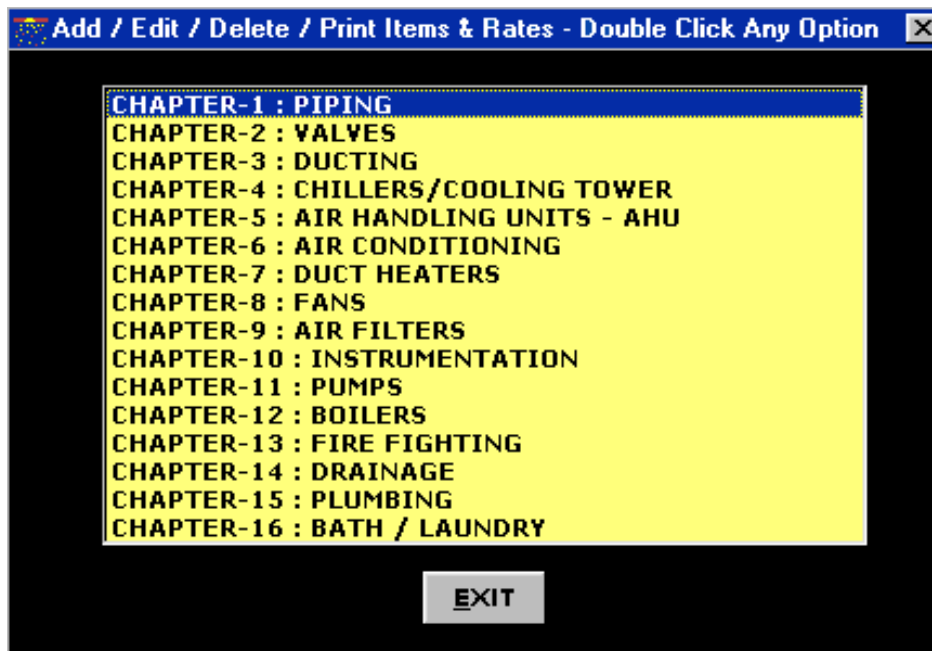
▶ *We will consider General Specs option only for demonstration purpose.*



▶ Now click General option. A " open file window " will be displayed as follows. Select File " 01 " & click open.



- ▶ A new menu will open displaying all the Chapters. Now double click " Chapter - 1 : Piping ".



- ▶ A new window will appear as follows. This is main window which can perform the following functions.

- Display all items.
- Print all items.
- Add your own items.
- Delete any existing item.
- Add Material, Labour, Subcontractor & Equipment Rates.
- One more field called " Item\_ID " is given, in case you want to identify items apart from the existing Item No.

You can select any item by taking the Blue cursor to that item row or just clicking with the mouse on any item row.



# DISPLAY/EDIT/ADDITION OF ITEMS AND RATES

Project No : 8912

## CHAPTER-1 : PIPING

Date : 14/5/07

Item_ID	Item No.	Item	Unit	Material R...	Labour Rate	Subcontra...	Equipment	
	1.1	Providing fixing jointing & testing spig...	M	1000	100	50	50	
	1.2	Providing fixing jointing & testing spig...	M					
	1.3	Providing fixing jointing & testing spig...	M					
	1.4	Providing fixing jointing & testing spig...	M					
	1.5	Providing & placing in position sand ca...	M					
	1.6	Providing & placing in position sand ca...	M					
	1.7	Providing & placing in position sand ca...	M					
	1.8	Providing & placing in position sand ca...	M					
	1.9	Providing & placing in position sand ca...	Nos					
	1.10	Providing & placing in position sand ca...	Nos					
	1.11	Providing & placing in position sand ca...	Nos					
	1.12	Providing & placing in position sand ca...	Nos					
	1.13	Providing & placing in position sand ca...	Nos					
	1.20	Providing & placing in position sand ca...	Nos					
	1.21	Providing & placing in position sand ca...	Nos					

### Edit Item No. 1.1

Item : Providing fixing jointing & testing spigot & socket (S&S) sand cast iron soil waste & vent pipes conforming to IS:1729 including all fittings like bends tees crosses with or without access doors lead jointing holder bat clamps etc. cutting holes in walls & floors & making good the same complete of nominal dia : 50 mm

Item ID :  Unit :  Basic Material Rate :  Basic Labour Rate :

Item No :  Subcontractor Rate :  Equipment Rate :

Item Rate :

**PRINT**

**ADD ITEM**

**EXIT**

**REMOVE**

**UPDATE**

- ▶ We will select the 1st item.  
Enter Labour Rate = 100  
Material Rate = 1000  
Subcontractor Rate = 50  
Equipment Rate = 50

Now Click UPDATE button.

You will see that Item Rate (With Pink background) will change to 1488

- ▶ Similarly you can give Rates of more items, which are likely to be used in the project. Always click UPDATE button to see the final rate. This final Item Rate is arrived at after adding default Overheads, Taxes & Profit margin, which you have already indicated while creating File. Now Click the EXIT button to leave this window. You are back to Chapter Menu. Here you can select other sections by double clicking any section & add the item rates of various items which you think will be required for your project.

STEP NO. 2 IS OVER.

# LEARN HVAC COST STEP BY STEP

## STEP NO. 3

Read\_Me Files Edit\_Items\_Rates Add\_Edit\_Quantities Summary Graphics { Programs\_1 Program\_2 Funda Excel Sh. Forms\_1 Forms\_2 }



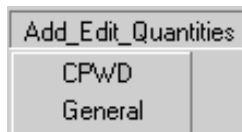
**BY: Y. A. Agboatwala**  
**B. E. (Civil), MIE, DBA, FIV**

▶ When Program starts, the graphics above is displayed. The Menu bar contains following options.

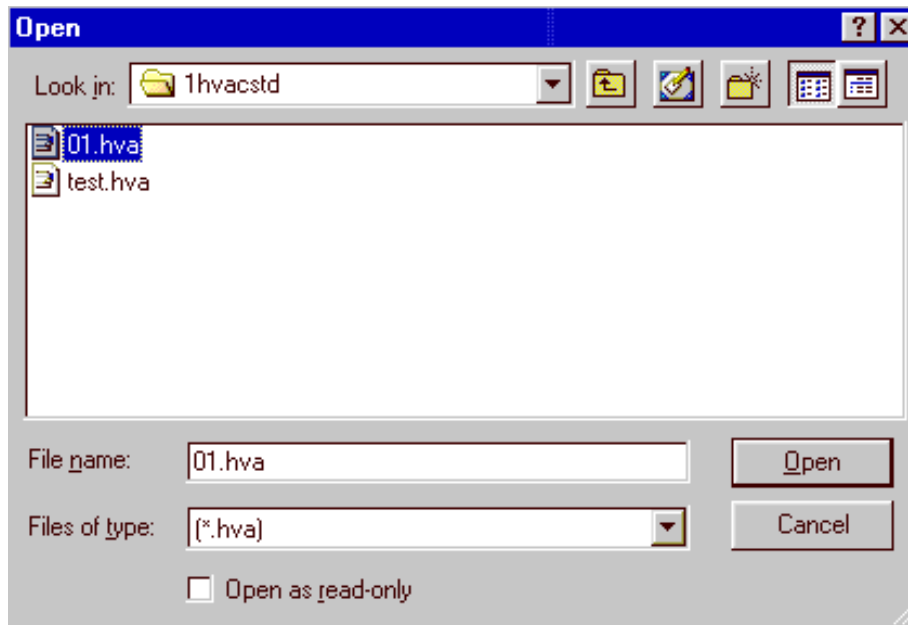
- I. Read Me
- II. Files
- III. Edit Item Rates
- IV. Add, Edit Quantities
- V. Summary
- VI. Graphics
- ..... Additional Programs / Info.
- VII. Programs\_1
- II X. Programs\_2
- IX. Funda
- X. Excel Sheets
- XI. Forms\_1
- XII. Forms\_2

Click the " Add, Edit Quantities " option in the MENU bar.

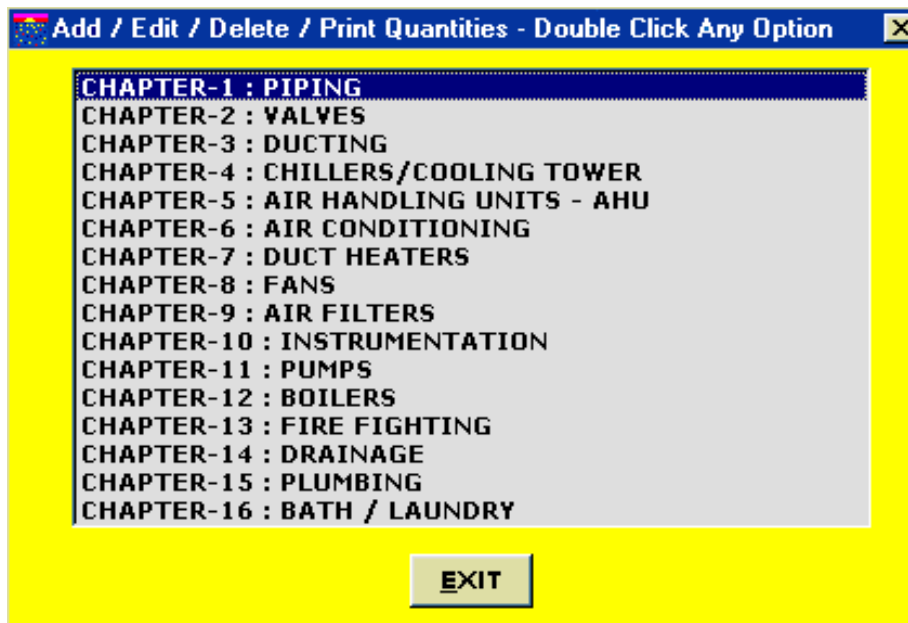
▶ *We will consider General Specs option only for demonstration purpose.*



▶ Now click General option. A " open file window " will be displayed as follows. Select File " 1 " & click open.



- ▶ A new menu will open displaying all the Chapters. Now double click " Chapter - 1 : Piping ".



- ▶ A new window will appear as follows. This is main window which can perform the following functions.

- Display all items.
- Print all items.
- Add your own items.
- Delete any existing item.
- Add Item Quantities.
- One more field called " Item\_ID " is given, in case you want to identify items apart from the existing Item No.

You can select any item by taking the Blue cursor to that item row or just clicking with the mouse on any item row.

**Note that " Item Rate ", which we had given in previous " Edit Item Rates " option has already appeared here automatically.**

# DISPLAY/ADD/EDIT/PRINTING OF QUANTITIES

Project No : 8912

## CHAPTER-1 : PIPING

Date : 14/5/07

Item_ID	Item No.	Item	Unit	Item_Rate	Quantity	Cost	
	1.1	Providing fixing jointing & testing spigot & socket (S&S) ...	M	1488	10	14880	
	1.2	Providing fixing jointing & testing spigot & socket (S&S) ...	M				
	1.3	Providing fixing jointing & testing spigot & socket (S&S) ...	M				
	1.4	Providing fixing jointing & testing spigot & socket (S&S) ...	M				
	1.5	Providing & placing in position sand cast iron (S&S) soil ...	M				
	1.6	Providing & placing in position sand cast iron (S&S) soil ...	M				
	1.7	Providing & placing in position sand cast iron (S&S) soil ...	M				
	1.8	Providing & placing in position sand cast iron (S&S) soil ...	M				
	1.9	Providing & placing in position sand cast iron (S&S) bend...	Nos				
	1.10	Providing & placing in position sand cast iron (S&S) bend...	Nos				
	1.11	Providing & placing in position sand cast iron (S&S) bend...	Nos				
	1.12	Providing & placing in position sand cast iron (S&S) bend...	Nos				
	1.13	Providing & placing in position sand cast iron (S&S) plain ...	Nos				
	1.18	Providing & placing in position sand cast iron (S&S) heel ...	Nos				
	1.19	Providing & placing in position sand cast iron (S&S) heel ...	Nos				
	1.20	Providing & placing in position sand cast iron (S&S) heel ...	Nos				
	1.21	Providing & placing in position sand cast iron (S&S) doub...	Nos				
	1.22	Providing & placing in position sand cast iron (S&S) doub...	Nos				

Edit Item No. 1.1 << Click UPDATE Button after Editing. >>

Item : Providing fixing jointing & testing spigot & socket (S&S) sand cast iron soil waste & vent pipes conforming to IS:1729 including all fittings like bends tees crosses with or without access doors lead jointing holder bat clamps etc. cutting holes in walls & floors & making good the same complete of nominal dia : 50 mm

Item ID :  Item No :  Unit :  Quantity :

MOVE UP

MOVE DOWN

PRINT

ADD ITEM

EXIT

REMOVE

UPDATE

- ▶ We will select the 1st item.  
Enter Quantity = 10

Now Click UPDATE button.

You will see that " Cost " column will indicate 14880 for 1st item.

- ▶ Similarly you can fill in more item quantities, which are likely to be used in this project. Always click UPDATE button to see the final item cost.

Now Click the EXIT button to leave this window.

You are back to Chapter Menu. Here you can select other sections by double clicking any section & add the item quantities of various items which you think will be required for your project.

STEP NO. 3 IS OVER.

# LEARN HVAC COST STEP BY STEP

## STEP NO. 4

Read\_Me Files Edit\_Items\_Rates Add\_Edit\_Quantities Summary Graphics { Programs\_1 Program\_2 Funda Excel Sh. Forms\_1 Forms\_2 }



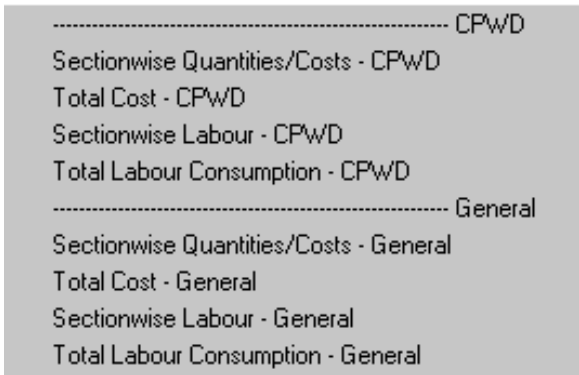
**BY: Y. A. Agboatwala**  
**B. E. (Civil), MIE, DBM, FIV**

▶ When Program starts, the graphics above is displayed. The Menu bar contains following options.

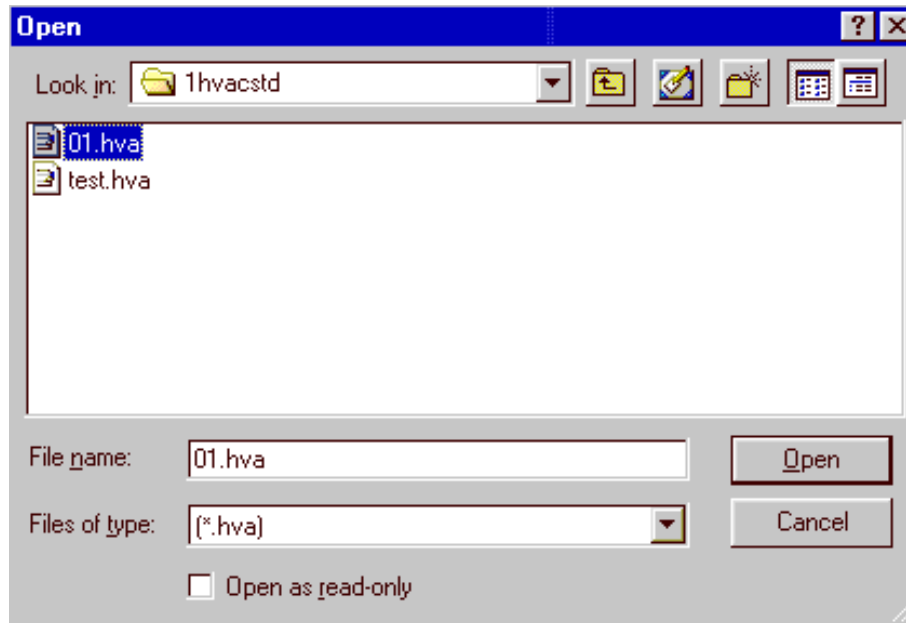
- I. Read Me
- II. Files
- III. Edit Item Rates
- IV. Add, Edit Quantities
- V. Summary
- VI. Graphics
- ..... Additional Programs / Info.
- VII. Programs\_1
- II X. Programs\_2
- IX. Funda
- X. Excel Sheets
- XI. Forms\_1
- XII. Forms\_2

Click the " Summary " option in the MENU bar. Following sub menu is displayed.

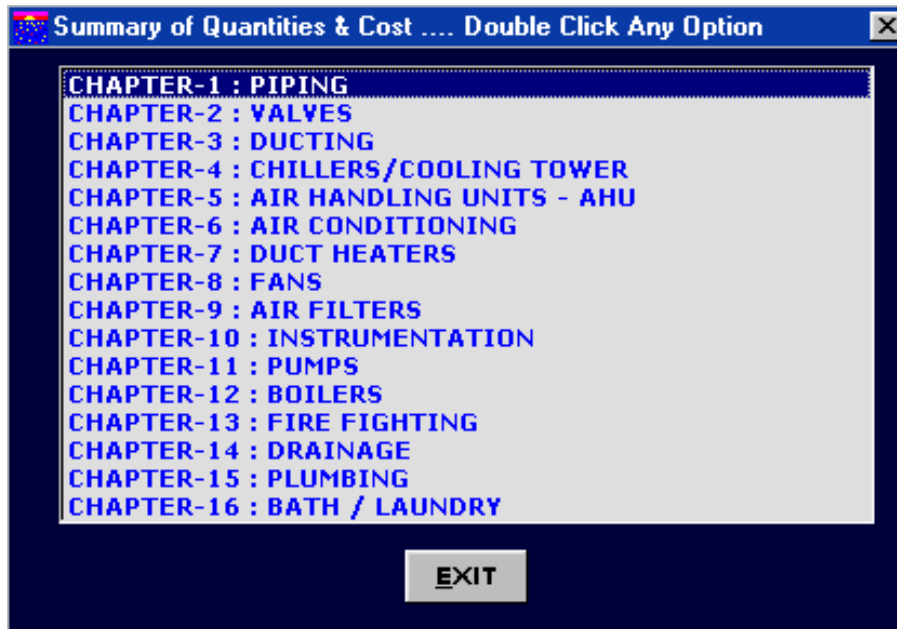
▶ *We will consider General Specs option only for demonstration purpose.*



▶ Now click Sectionwise Quantities/Costs - General  
A " open file window " will be displayed as follows.  
Select File " 01 " & click open.



- ▶ A new menu will open as follows displaying all the Chapters. Now double click " Chapter - 1 : Piping ".



- ▶ Following window is displayed.

This window displays the following parameters.

- Sectional Item Quantity, Rate and Cost.
- Sectional Item Overhead, Profit and Taxes.
- Total Sectional Overhead, Profit, Taxes and Cost.
- By Clicking " PRINT " button, all the records will be printed.

# SECTIONAL SUMMARY OF QUANTITIES/COSTS

Project No : 8912

CHAPTER-1 : PIPING

Date : 15/5/07

ITEM_ID	ITEM NO.	ITEM	UNIT	QUANTITY	RATE	COST	
	1.1	Providing fixing jointing & testing...	M	10	1488	14880	

Overhead : 1199.999

Taxes : 479.999

Profit : 1199.999

Total Overhead : 1199.999

Total Taxes : 479.999

Total Profit : 1199.999

Total Sectional Cost : 14880

PRINT

EXIT

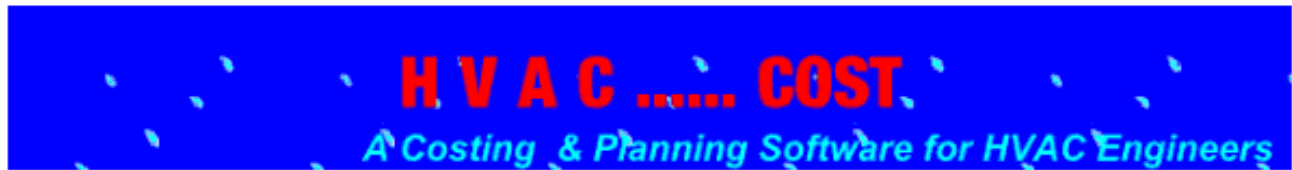
- ▶ Now Click the EXIT button to leave this window.  
You are back to Chapter Menu.  
Similarly you can display cost of the required section by double clicking the selected section.  
Now click EXIT to leave this option.

STEP NO. 4 IS OVER.

# LEARN HVAC COST STEP BY STEP

## STEP NO. 5

Read\_Me Files Edit\_Items\_Rates Add\_Edit\_Quantities Summary Graphics { Programs\_1 Program\_2 Funda Excel Sh. Forms\_1 Forms\_2 }



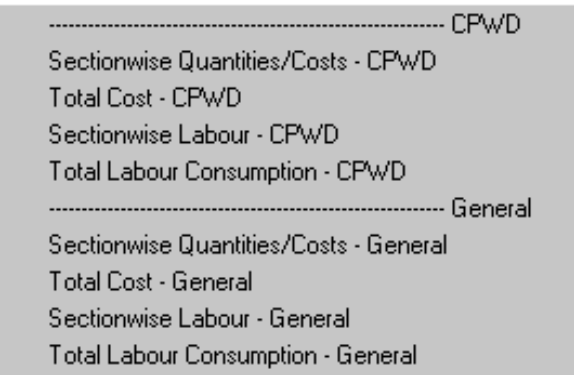
**BY: Y. A. Agboatwala**  
**B. E. (Civil), MIE, DBM, FIV**

▶ When Program starts, the graphics above is displayed. The Menu bar contains following options.

- I. Read Me
- II. Files
- III. Edit Item Rates
- IV. Add, Edit Quantities
- V. Summary
- VI. Graphics
- ..... Additional Programs / Info.
- VII. Programs\_1
- II X. Programs\_2
- IX. Funda
- X. Excel Sheets
- XI. Forms\_1
- XII. Forms\_2

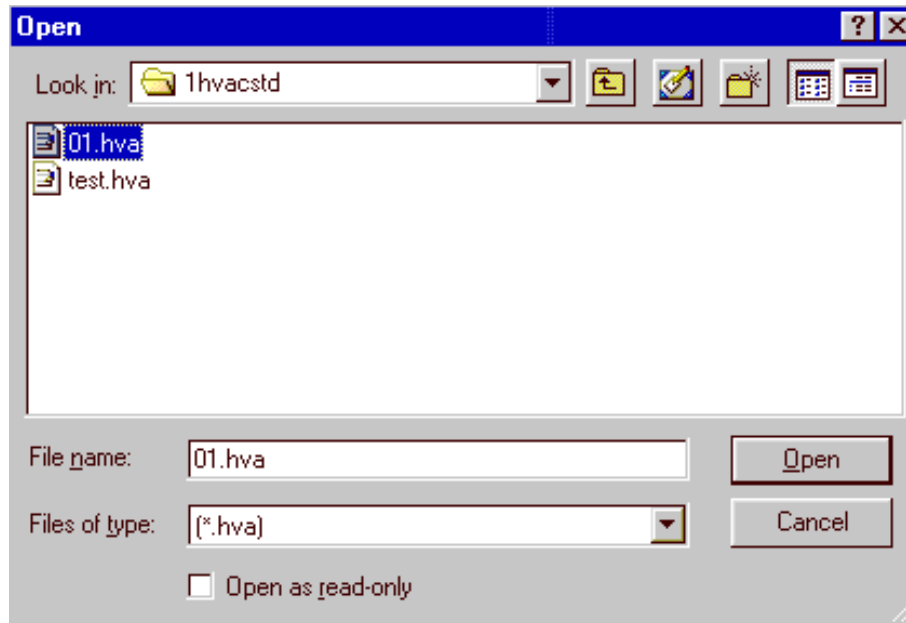
Click the " Summary " option in the MENU bar. Following sub menu is displayed.

▶ *We will consider General Specs option only for demonstration purpose.*



▶ Now click Total Cost - General  
A " open file window " will be displayed as follows.  
Select File " 01 " & click open.





▶ Following window is displayed.

This window displays the following parameters.

- Sectional Item Overhead, Profit, Taxes and Costs.
- Total Project Overhead, Profit, Taxes and Cost.
- By Clicking " PRINT " button, all the records will be printed.

## SUMMARY OF PROJECT COST

Organization : Super Civil CD

Project : Central AC Sys for Lab.

Structure ID : Lab Building

Total Project Cost :

Total Taxes :

Client : y. a. agbaotawala

Project No : 8912

Date : 15/5/07

Total Overhead :

Total Profit :

SECTION	COST	OVERHEAD	TAX	PROFIT	% TOTAL
CHAPTER-1 : PIPING	14880	1200	480	1200	6.82
CHAPTER-2 : VALVES	16368	1320	528	1320	7.51
CHAPTER-3 : DUCTING	12276	990	396	990	5.63
CHAPTER-4 : CHILLERS/COOLING TOWER	16368	1320	528	1320	7.51
CHAPTER-5 : AIR HANDLING UNITS - A...	19592	1580	632	1580	8.99
CHAPTER-6 : AIR CONDITIONING	13640	1100	440	1100	6.26
CHAPTER-7 : DUCT HEATERS	10230	825	330	825	4.69
CHAPTER-8 : FANS	12276	990	396	990	5.63
CHAPTER-9 : AIR FILTERS	13764	1110	444	1110	6.31
CHAPTER-10 : INSTRUMENTATION	13764	1110	444	1110	6.31
CHAPTER-11 : PUMPS	13950	1125	450	1125	6.4
CHAPTER-12 : BOILERS	14260	1150	460	1150	6.54
CHAPTER-13 : FIRE FIGHTING	12276	990	396	990	5.63
CHAPTER-14 : DRAINAGE	10912	880	352	880	5
CHAPTER-15 : PLUMBING	10912	880	352	880	5
CHAPTER-16 : BATH / LAUNDRY	12400	1000	400	1000	5.69

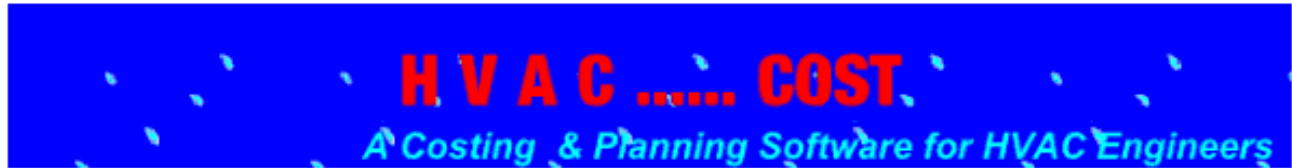
▶ Now Click the EXIT button to leave this option.

STEP NO. 5 IS OVER.

# LEARN HVAC COST STEP BY STEP

## STEP NO. 6

Read\_Me Files Edit\_Items\_Rates Add\_Edit\_Quantities Summary Graphics { Programs\_1 Program\_2 Funda Excel Sh. Forms\_1 Forms\_2 }



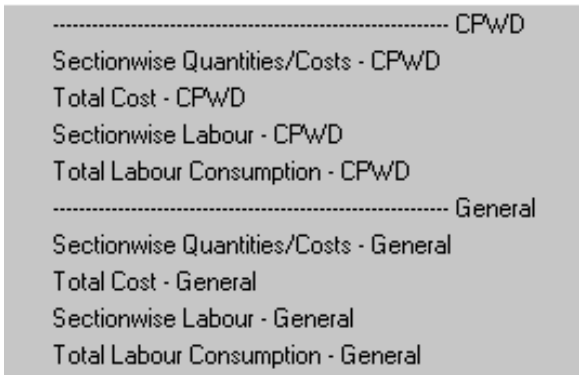
**BY: Y. A. Agboatwala**  
**B. E. (Civil), MIE, DBM, FIV**

▶ When Program starts, the graphics above is displayed. The Menu bar contains following options.

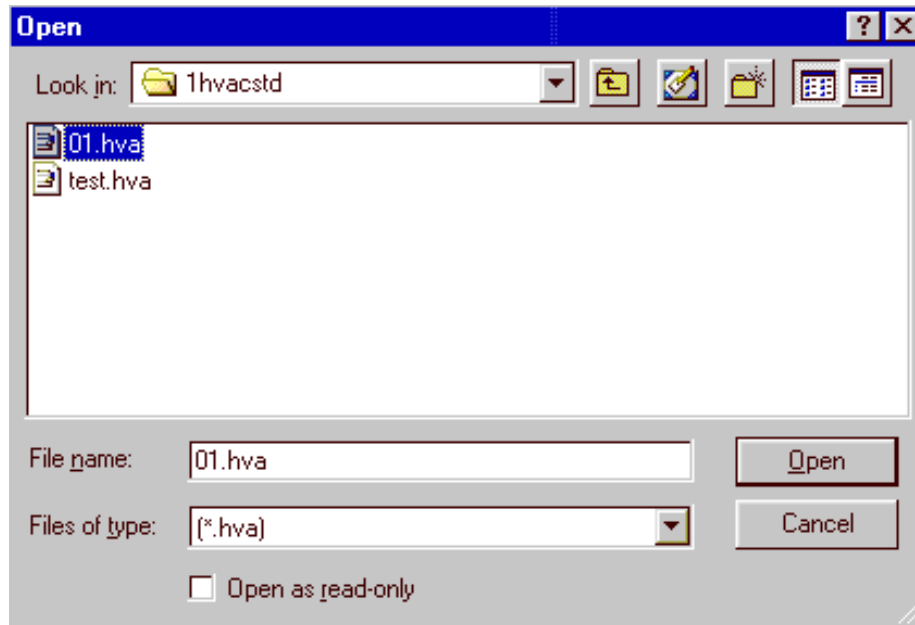
- I. Read Me
- II. Files
- III. Edit Item Rates
- IV. Add, Edit Quantities
- V. Summary
- VI. Graphics
- ..... Additional Programs / Info.
- VII. Programs\_1
- II X. Programs\_2
- IX. Funda
- X. Excel Sheets
- XI. Forms\_1
- XII. Forms\_2

Click the " Summary " option in the MENU bar. Following sub menu is displayed.

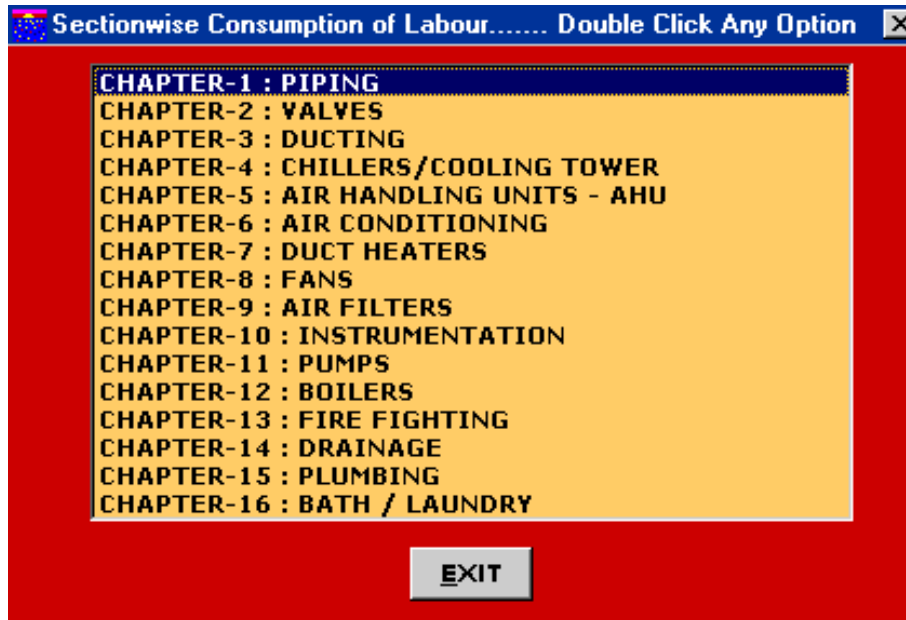
▶ *We will consider General Specs option only for demonstration purpose.*



▶ Now click Sectionwise Labour - General  
A " open file window " will be displayed as follows.  
Select File " 01 " & click open.



- ▶ A new menu will open as follows displaying all the Chapters. Now double click " Chapter - 1 : Piping ".



- ▶ Following window is displayed.

This window displays the following parameters.

- Sectional Itemwise Skilled Labour, Un Skilled Labour & Foreman Quantities in Nos.
- Total Sectional Skilled Labour, Un Skilled Labour & Foreman Quantities in Nos.
- By Clicking " PRINT " button, all the records will be printed.

# LABOUR CONSUMPTION OF SECTION

Project No : 8912

## CHAPTER-1 : PIPING

Date : 15/5/07

Item ID	Item_No	Item	Skill_Labour	Labour	Foreman
	1.1	Providing fixing jointing & testing spigot & soc...	1.47	2.94	.294

**Item :** Providing fixing jointing & testing spigot & socket (S&S) sand cast iron soil waste & vent pipes conforming to IS:1729 including all fittings like bends tees crosses with or without access doors lead jointing holder bat clamps etc. cutting holes in walls & floors & making good the same complete of nominal dia : 50 mm

**Total Skill Labour in Nos :** 1.47  
(Of This Section)

**Total Un Skill Labour in Nos :** 2.94

**EXIT**

**PRINT**

**Total Foreman in Nos :** .29

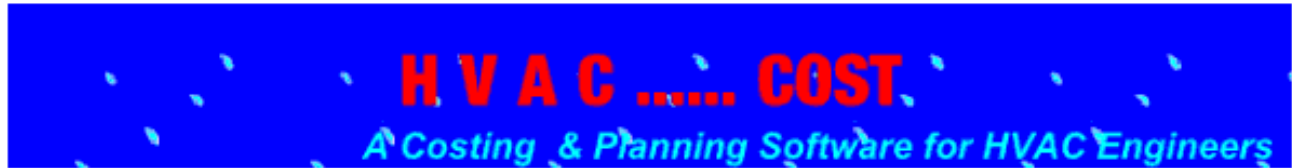
- ▶ Now Click the EXIT button to leave this window. You are back to Chapter Menu. Similarly you can display labour consumption of the required section by double clicking the selected section. Now click EXIT to leave this option.

STEP NO. 6 IS OVER.

# LEARN HVAC COST STEP BY STEP

## STEP NO. 7

Read\_Me Files Edit\_Items\_Rates Add\_Edit\_Quantities Summary Graphics { Programs\_1 Program\_2 Funda Excel Sh. Forms\_1 Forms\_2 }



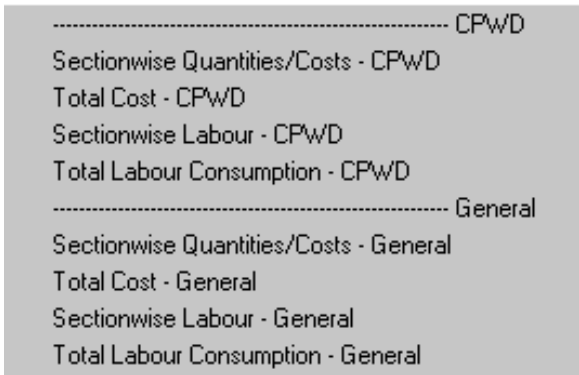
**BY: Y. A. Agboatwala**  
**B. E. (Civil), MIE, DBM, FIV**

▶ When Program starts, the graphics above is displayed. The Menu bar contains following options.

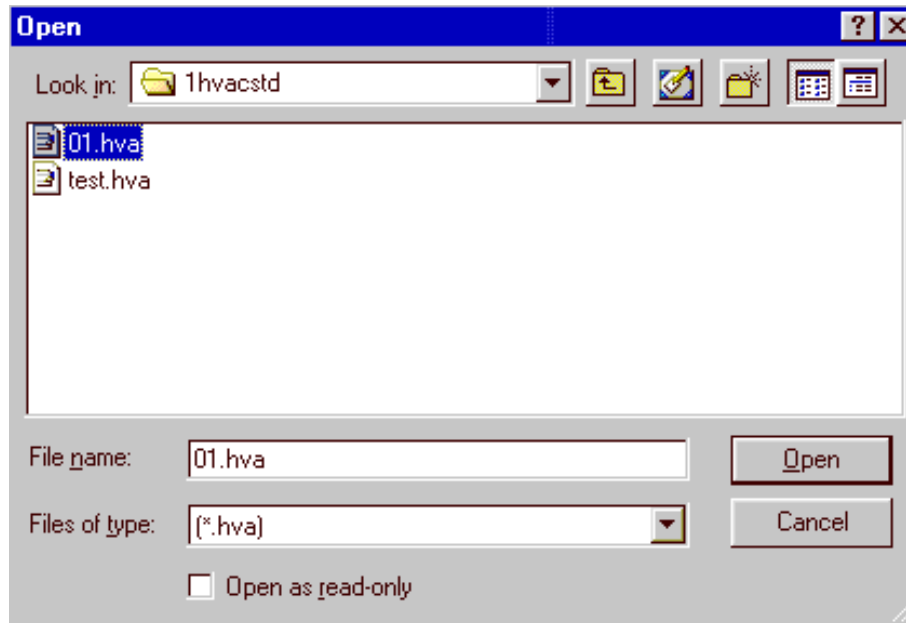
- I. Read Me
- II. Files
- III. Edit Item Rates
- IV. Add, Edit Quantities
- V. Summary
- VI. Graphics
- ..... Additional Programs / Info.
- VII. Programs\_1
- II X. Programs\_2
- IX. Funda
- X. Excel Sheets
- XI. Forms\_1
- XII. Forms\_2

Click the " Summary " option in the MENU bar. Following sub menu is displayed.

▶ *We will consider General Specs option only for demonstration purpose.*



▶ Now click Total Labour Consumption - General  
A " open file window " will be displayed as follows.  
Select File " 01 " & click open.



▶ Following window is displayed.

This window displays the following parameters.

- Total Skilled, Un Skilled Labour & Foreman in Nos.
- Total Skilled, Un Skilled Labour & Foreman Cost.
- By Clicking " PRINT " button, all the records will be printed.

## LABOUR CONSUMPTION

Organization : Super Civil CD

Date : 15/5/07

Project : Central AC Sys for Lab.

Structure ID : Lab Building

Client : y. a. agbaotawala

Project No : 8912

Skill Labour - Nos	22.75
Un Skill Labour - Nos	63.19
Foreman - Nos	3.25
<b>Total Manpower</b>	<b>89.19</b>

Skill Labour Cost	5687.5
Un Skill Labour Cost	11374.2
Foreman Cost	1137.5
<b>Total Labour Cost</b>	<b>18199.2</b>

**PRINT**

**EXIT**

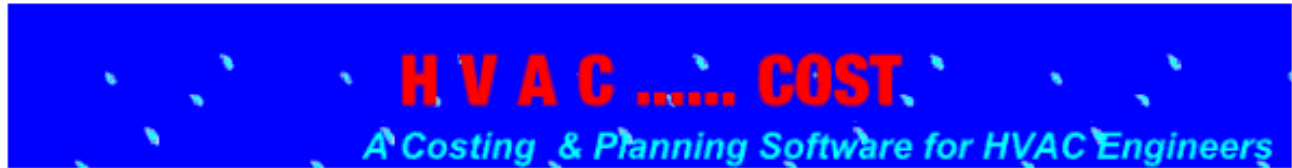
▶ Now Click the EXIT button to leave this option.

STEP NO. 7 IS OVER.

# LEARN HVAC COST STEP BY STEP

## STEP NO. 8

Read\_Me Files Edit\_Items\_Rates Add\_Edit\_Quantities Summary Graphics { Programs\_1 Program\_2 Funda Excel Sh. Forms\_1 Forms\_2 }



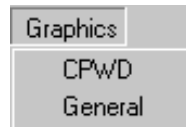
**BY: Y. A. Agboatwala**  
**B. E. (Civil), MIE, DBM, FIV**

▶ When Program starts, the graphics above is displayed. The Menu bar contains following options.

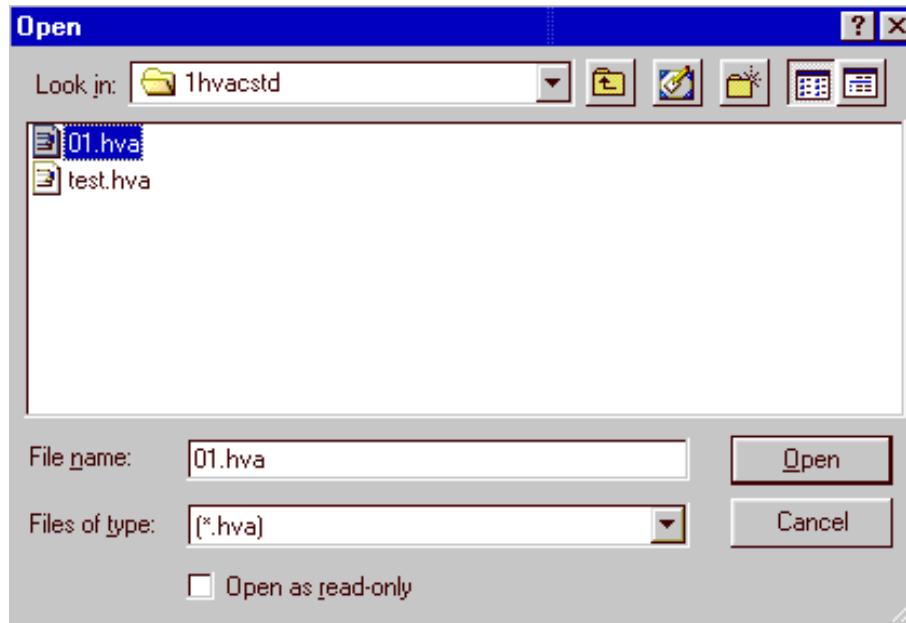
- I. Read Me
- II. Files
- III. Edit Item Rates
- IV. Add, Edit Quantities
- V. Summary
- VI. Graphics
- ..... Additional Programs / Info.
- VII. Programs\_1
- II X. Programs\_2
- IX. Funda
- X. Excel Sheets
- XI. Forms\_1
- XII. Forms\_2

Click the " Graphics " option in the MENU bar. Following sub menu is displayed.

▶ *We will consider General Specs option only for demonstration purpose.*



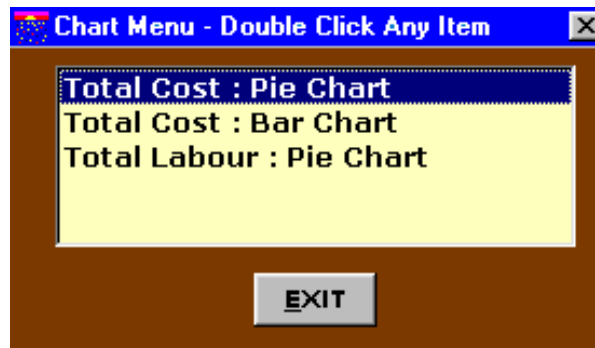
▶ Now click General.  
A " open file window " will be displayed as follows.  
Select File " 01 " & click open.



▶ Following Chart Menu window is displayed.

This window displays the following parameters.

- Total Cost : Pie Chart
- Total Cost : bar Chart
- Total Labour : Pie Chart

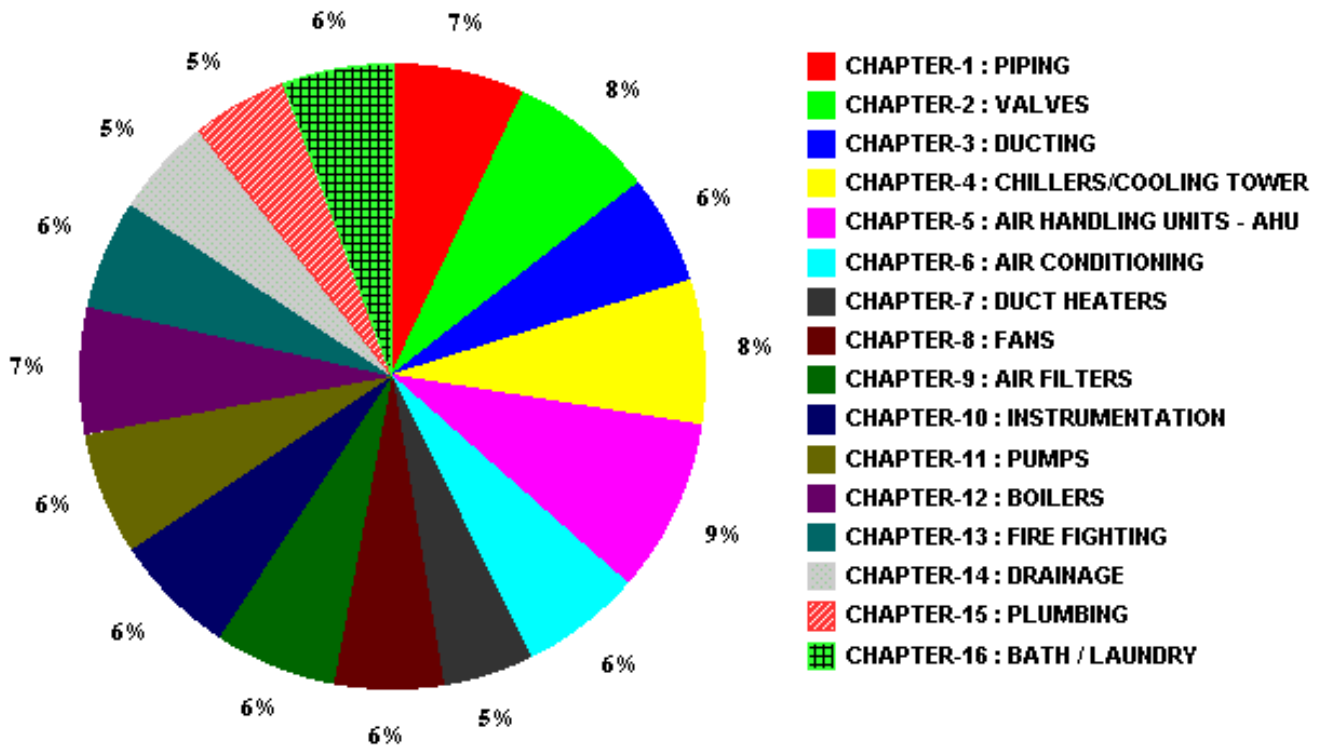


▶ Now Click the Total Cost : Pie Chart option.

Following window opens up, displaying Sectional Costs (Chapter Wise) as % of total Cost.



# SECTIONAL COSTS - PIE CHART



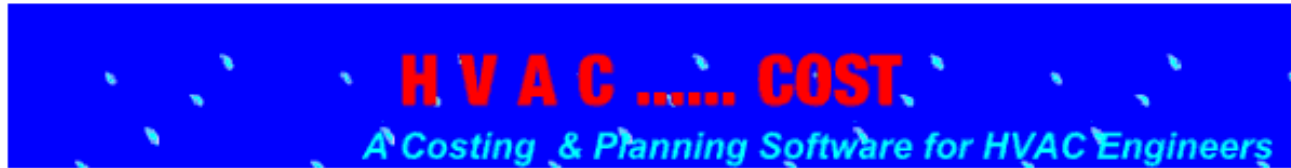
▶ Similarly a user can display other Charts.  
Now Click the EXIT button to leave this option.

STEP NO. 8 IS OVER.

# LEARN HVAC COST STEP BY STEP

## STEP NO. 9

Read\_Me Files Edit\_Items\_Rates Add\_Edit\_Quantities Summary Graphics { Programs\_1 Program\_2 Funda Excel Sh. Forms\_1 Forms\_2 }



**BY: Y. A. Agboatwala**  
**B. E. (Civil), MIE, DBM, FIV**

▶ When Program starts, the graphics above is displayed. The Menu bar contains following options.

- I. Read Me
- II. Files
- III. Edit Item Rates
- IV. Add, Edit Quantities
- V. Summary
- VI. Graphics
- ..... Additional Programs / Info.
- VII. Programs\_1
- II X. Programs\_2
- IX. Funda
- X. Excel Sheets
- XI. Forms\_1
- XII. Forms\_2

Click the " Programs\_1 " option in the MENU bar. Following sub menu is displayed. \_

- Cooling Load
- Heating Load
- Energy Consumption
- Energy Consumption - Alt.
- Motor Heat Gain
- Agricultural Heat Gain
- Heat Gain + Loss
- psychrometrics
- Steam Table
- Water Properties
- Steam Pressure Drop
- Unit Conversion
- Air Supply - Sensible
- Air Supply - Latent
- + Ve Ventilation
- Ventilation - Outside Wind
- Ventilation - Temp. Difference
- Combine Ventilation
- Duct Heat Gain
- Equivalent Duct Dia
- Friction factor
- Pressure and Head Loss
- Duct Friction Loss
- Piping Friction Loss

▶ If you click the " Programs\_2 " option in the MENU bar. Following sub menu is displayed.

- Compressible Flow Pr. Loss
- Gas Friction Loss
- Fan Properties + Eqv. Duct Size
- Temp. Rise in Pumps
- Self Venting Line Size
- Gas Density
- Open Channel Flow
- Tank Draining Calc.
- Heat Exchanger Sizing
- Vessel Volume
- Mannings Equation
- Energy Equation
- Static Pressure
- Minor Loss
- Major Loss - Darcy
- Major Loss - Hazen
- Equivalent Pipe Length
- Flow Rate

▶ If any option is clicked, corresponding program is displayed. For example if " Cooling Load " option is clicked following screen will be displayed.

HVAC COST  
File Exit

# COOLING LOAD CALCULATIONS OF BUILDINGS / COLD STORAGE FOR INDIAN CITIES

- ▶ If " File " option is clicked, two more options viz; " New " & " Open " are displayed. This file creation option is similar to what is explained in step no. 1. Once the file is created & saved, following screen will be displayed.

**COOLING LOAD CALCULATIONS**

Select Nearest City:

Total Floor Area of Bldg. in M2 Excluding GF + Roof:

Total Vol. of Bldg. in M3:

Area of Roof in M2:

Bldg. having Windows on:

Total # of Doors in Building:

Average Door Usage:

No. of Bldg. Occupants:

Roof Type:

**External Wall Area in M2 + thk + Color + Outside Shade**

Facing South	<input type="text" value="235"/>	<input type="text" value="230 tk brick Dark Color/Shade"/>
Facing SW	<input type="text" value="235"/>	<input type="text" value="230 tk brick Light Color/No Shad"/>
Facing West	<input type="text" value="235"/>	<input type="text" value="300 tk brick Dark/Shade"/>
Facing NW	<input type="text" value="235"/>	<input type="text" value="300 tk brick Dark/No Shade"/>
Facing North	<input type="text" value="235"/>	<input type="text" value="200 tk Hollow Block Dark/No Sha"/>
Facing NE	<input type="text" value="235"/>	<input type="text" value="200 tk Hollow Block Dark/No Sha"/>
Facing East	<input type="text" value="235"/>	<input type="text" value="150 tk Concrete Dark/Shade"/>
Facing SE	<input type="text" value="235"/>	<input type="text" value="150 tk Concrete Light/No Shade"/>

**Window/Glass Area in M2 and Type**

Facing South	<input type="text" value="100"/>	<input type="text" value="No Shade"/>
Facing South West	<input type="text" value="100"/>	<input type="text" value="Inside Shade"/>
Facing West	<input type="text" value="100"/>	<input type="text" value="Tinted"/>
Facing North West	<input type="text" value="100"/>	<input type="text" value="Outside Shade"/>
Facing North	<input type="text" value="100"/>	<input type="text" value="No Shade"/>
Facing North East	<input type="text" value="100"/>	<input type="text" value="Inside Shade"/>
Facing East	<input type="text" value="100"/>	<input type="text" value="Tinted"/>
Facing South East	<input type="text" value="100"/>	<input type="text" value="Outside Shade"/>

Total Area of Partitions in M2:

Building Type:

AC Ducting:  User :

Total Lights in Watts:

Total Appliances in Watts:

Total Motor Loads in Watts:

Heat Gain from Fruit/Veg. in Watts:

Any Other Consumption in Watts:

Outside Sp. Humidity in grms/Kg:

Inside Sp. Humidity in grms/Kg:

Outside DBT:  Degree Centigrade Inside DBT:

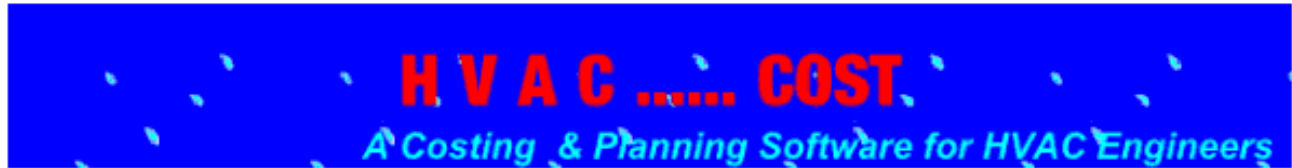
- ▶ If the " Calculate Load " button is clicked, another screen will display the design results. Note that the parameters given above are editable. " Heating Load " design program is similar to Cooling Loads. All other programs are straight forward, without file create & save facilities. Now Click the EXIT button to leave this option.

STEP NO. 9 IS OVER.

# LEARN HVAC COST STEP BY STEP

## STEP NO. 10

Read\_Me Files Edit\_Items\_Rates Add\_Edit\_Quantities Summary Graphics { Programs\_1 Program\_2 Funda Excel Sh. Forms\_1 Forms\_2 }



**BY: Y. A. Agboatwala**  
**B. E. (Civil), MIE, DBM, FIV**

▶ When Program starts, the graphics above is displayed. The Menu bar contains following options.

- I. Read Me
- II. Files
- III. Edit Item Rates
- IV. Add, Edit Quantities
- V. Summary
- VI. Graphics
- ..... Additional Programs / Info.
- VII. Programs\_1
- II X. Programs\_2
- IX. Funda
- X. Excel Sheets
- XI. Forms\_1
- XII. Forms\_2

If you click the Forms\_1 option then following graphics will appear.\_

Measurement Sheet  
R A Bill - CPWD Item Rate  
R A Bill - CPWD Lump Sum  
Advance Payment - CPWD  
R A Bill - General  
Projected Delay Report  
Projected Profit  
Projected Material Consumption  
Projected Labour Consumption  
Actual Delay Report  
Actual Profit / Loss  
Actual Material Consumption  
Actual Labour Consumption  
Profit Control  
Material Control  
Labour Control  
Daily Progress Report  
Material Inward Report  
Material Transfer Receipt  
Material Issue Slip  
Daily Store Consumption  
Daily Departmental Labour Slip  
Watchman Report - Material  
Watchman Report - Visitors  
Inspection Report  
Indent Slip  
Pending Requisitions  
Material Consumption Statement

▶ If you click the Forms\_2 option then following graphics will appear.

- Fan / Blower Data Sheet
- Element Filter Data Sheet
- Heat Exchanger Data Sheet
- Agitator / Mixer Data Sheet
- Pump Data Sheet
- Compressor
- Condenser
- Chiller
- Refrigerant Piping
- A H U
- Cooling Tower
- Centrifugal Pumps
- Water Piping
- Electrical
- Controls/Ducting/Insulation
- Electricity Consumption Statement
- Water Consumption Statement
- Machinery Status Report
- Machinery Maintenance Report
- Excess Material List
- Progress Report
- Material Planning Schedule
- Activity Schedule
- Crash Cost Schedule
- Calendar Date / Working Day
- Material Order/Receipt Schedule
- Labour Payment Schedule

▶ The Forms\_1 & Forms\_2 options display various typical Data Sheets / forms, formats or templates generally used in HVACI Construction industry. A typical quantity measurement sheet is displayed as under.

### MEASUREMENT / QUANTITY SHEET

#### SECTION XXX – : ZZZZZZZZZ

SN	Item No	Item – Description	Unit	<u>Nos</u>				QTY
1								
2								
3								
4								
5								
6								
7								

▶ All the above Forms / Formats / Templates are in M. S. WORD format. In case of any difficulty in opening the above documents, user can directly access the above files from C: \ Program files \ HVAC COST \ Forms directory.

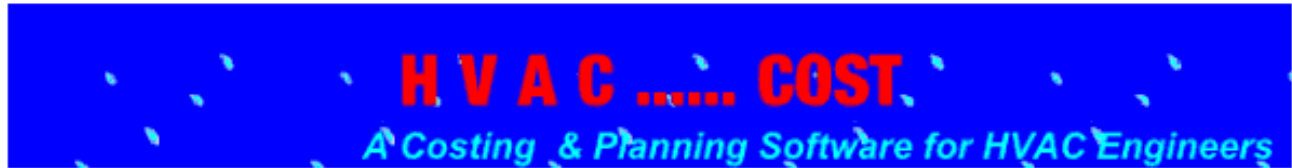
STEP NO. 10 IS OVER.



# LEARN HVAC COST STEP BY STEP

## STEP NO. 11

Read\_Me Files Edit\_Items\_Rates Add\_Edit\_Quantities Summary Graphics { Programs\_1 Program\_2 Funda Excel Sh. Forms\_1 Forms\_2 }



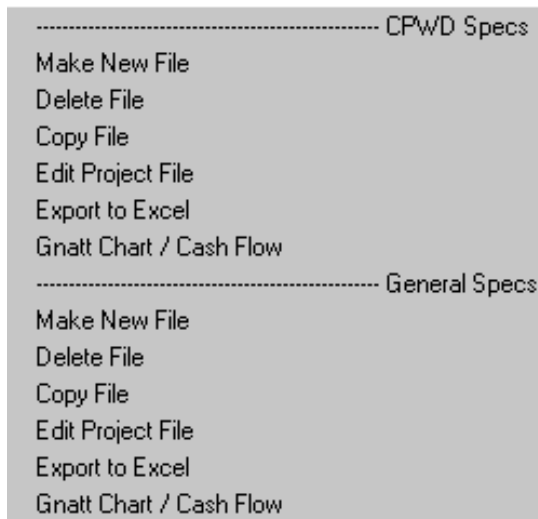
**BY: Y. A. Agboatwala**  
**B. E. (Civil), MIE, DBM, FIV**

▶ When Program starts, the graphics above is displayed. The Menu bar contains following options.

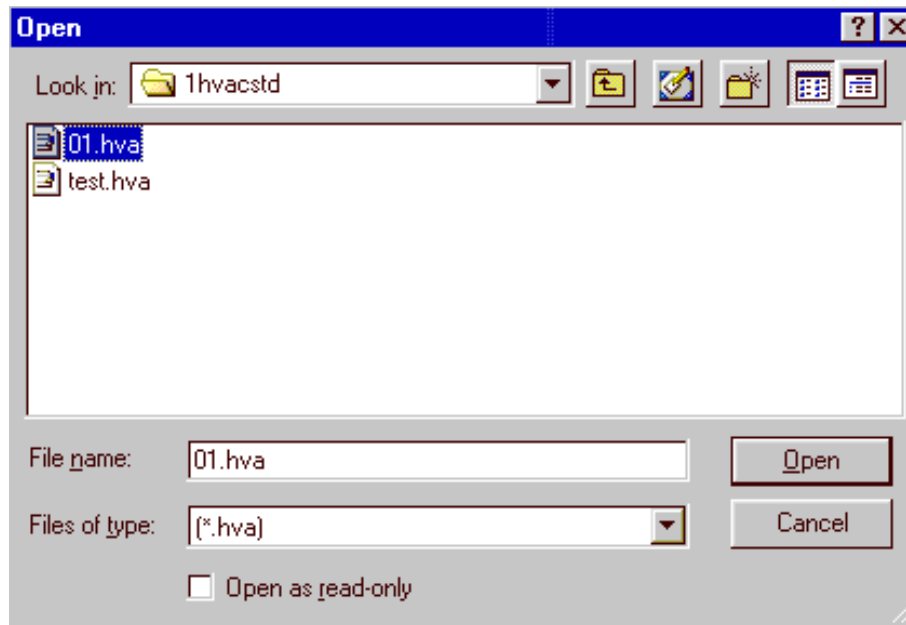
- I. Read Me
- II. Files
- III. Edit Item Rates
- IV. Add, Edit Quantities
- V. Summary
- VI. Graphics
- ..... Additional Programs / Info.
- VII. Programs\_1
- II X. Programs\_2
- IX. Funda
- X. Excel Sheets
- XI. Forms\_1
- XII. Forms\_2

▶ *We will consider General option only for demonstration purpose.*

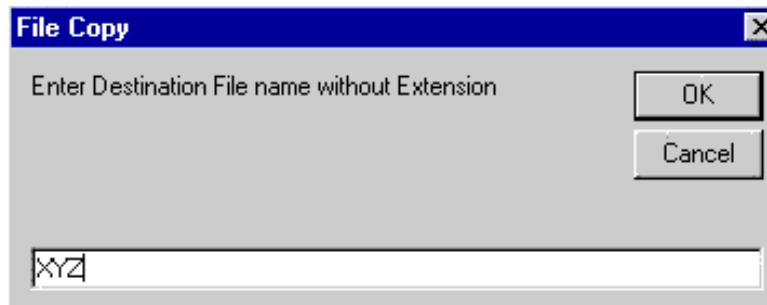
Click the FILE option in the MENU bar. The following window will open. \_



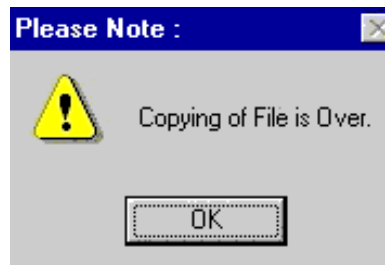
- ▶ Now click Copy File option. A new window will appear as follows, asking for the name of the File to be copied.



- ▶ Now click " 01 " file & click open. A new window will appear as follows, asking for the name of the destination file.

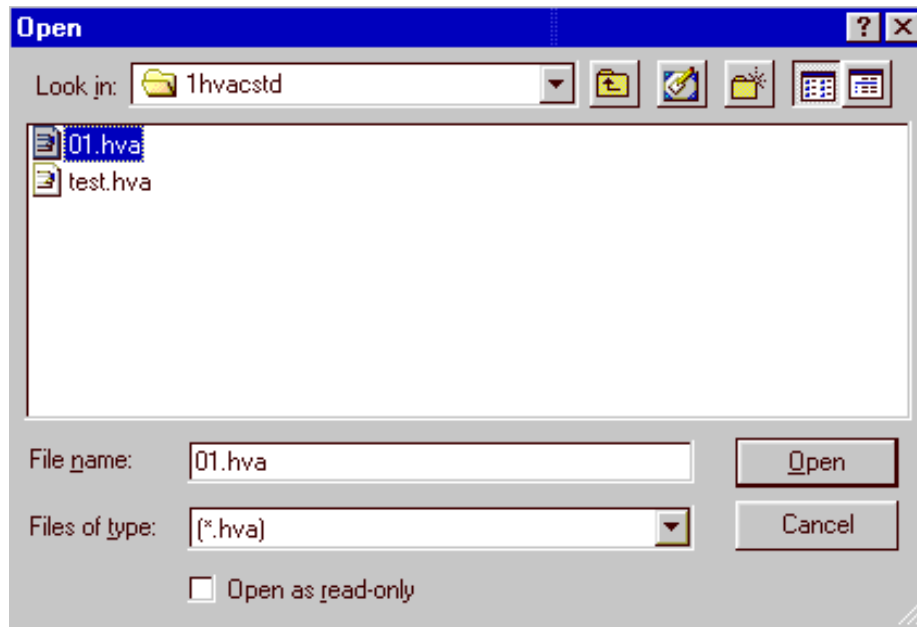


- ▶ Give the destination file name as " XYZ ". Press " OK " button. A new message window will appear as follows.

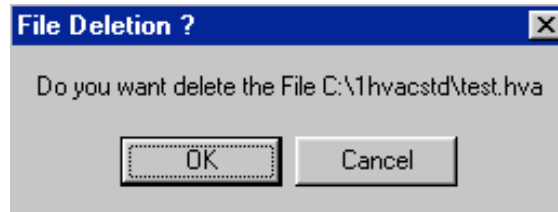


- ▶ The above message confirms the copying of all respective files to new XYZ file. Note that original file " 01 " is intact. Press " OK " button to exit.

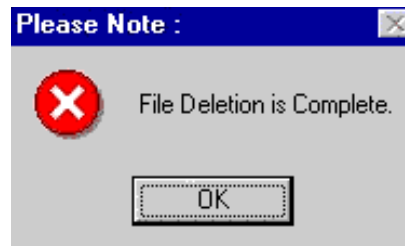
- ▶ Again Now click Delete File option. A new window will appear as follows, asking for the name of the File to be deleted.



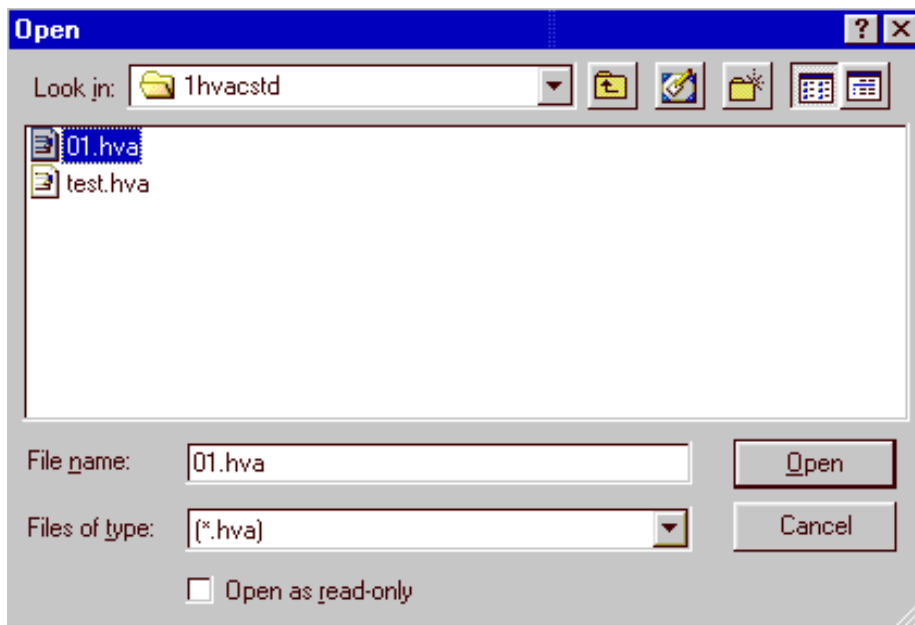
- ▶ Select " test " file & click " Open " button. A new window will open as follows, requiring confirmation.



- ▶ Click the " OK " button, again a new window will open as follows, confirming deletion of " test " file.



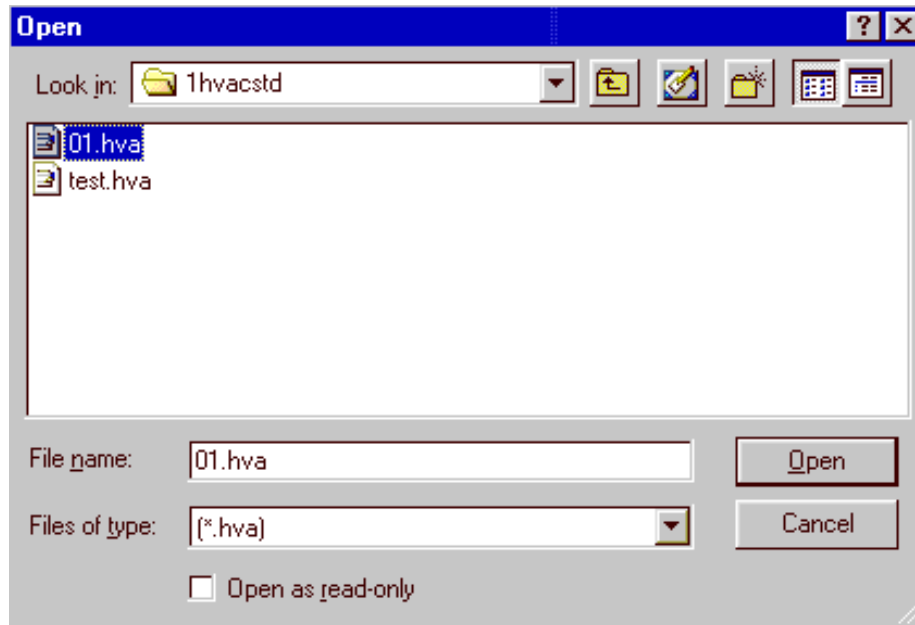
- ▶ Now click Edit Project File option. A new window will appear as follows, asking for the name of the project File to be Edited.



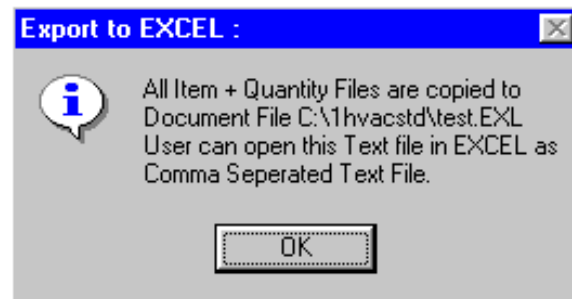
- ▶ Now click " 1 " file & click open. A new window will appear as follows, enabling user to change the various project parameters.

EDIT PROJECT DETAILS			
File Name :	C:\1hvacstd\01.hva	Date :	15/5/07
Organization :	Super Civil CD		
Project :	Central AC Sys for Lab.		
Project No :	8912		
Client ID :	y. a. agbaotawala		
Building / Structure ID :	Lab Building		
Project Duration in Months :	24	Project Over Head in %	10
Taxes in %	4	Profit Margin in %	10
Skill labour Wage / day	250	Un Skilled Labour Wage	180
Foreman Cost / day	350	Mobilization Advance in %	10
Recovery of Advance in %	10	Security Deposit in %	10
<input type="button" value="EXIT"/>		<input type="button" value="PRINT"/>	

- ▶ After you have completed editing the various project parameters click " EXIT " button.
- ▶ Now click Export QTY to EXCEL option. A new window will appear as follows, asking for the name of the project File to be Exported to EXCEL.



- ▶ Now click " test " file & click open. A new window will appear as follows, indicating that all the quantity files are copied to a new file with " .EXL " extension.



- ▶ User can open this Text file in EXCEL as comma separated Text File.

STEP NO. 11 IS OVER.

# LEARN HVAC COST STEP BY STEP

## STEP NO. 12

Read\_Me Files Edit\_Items\_Rates Add\_Edit\_Quantities Summary Graphics { Programs\_1 Program\_2 Funda Excel Sh. Forms\_1 Forms\_2 }



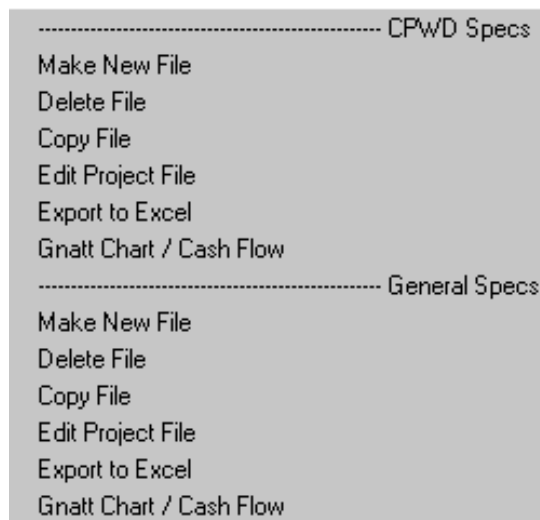
**BY: Y. A. Agboatwala  
B. E. (Civil), MIE, DBA, FIV**

▶ When Program starts, the graphics above is displayed. The Menu bar contains following options.

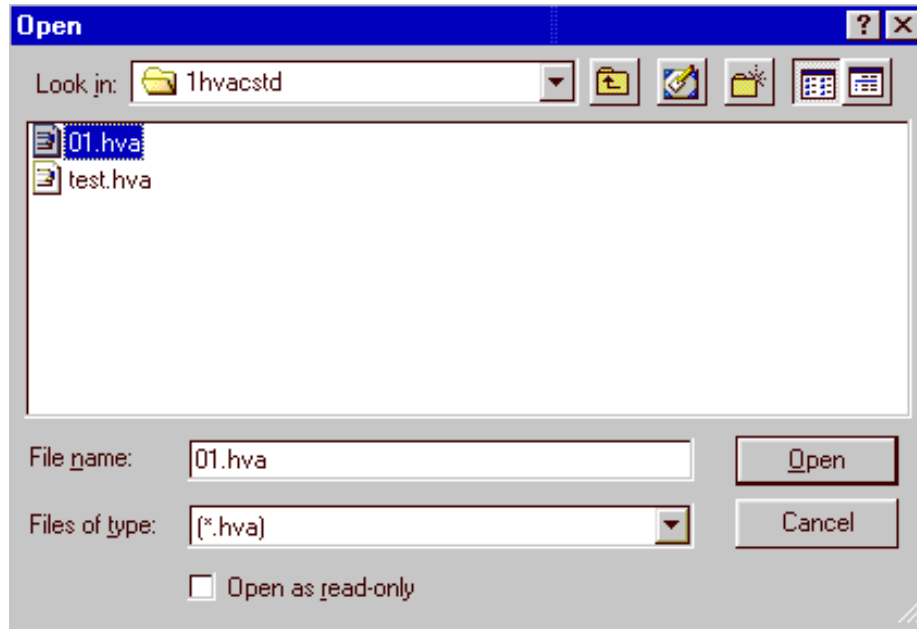
- I. Read Me
- II. Files
- III. Edit Item Rates
- IV. Add, Edit Quantities
- V. Summary
- VI. Graphics
- ..... Additional Programs / Info.
- VII. Programs\_1
- II X. Programs\_2
- IX. Funda
- X. Excel Sheets
- XI. Forms\_1
- XII. Forms\_2

▶ *We will consider General option only for demonstration purpose.*

Click the FILE option in the MENU bar. The following window will open. \_



- ▶ Now click Gnatt Chart / Cash Flow option. A new window will appear as follows, asking for the file name.



- ▶ Now click " 01 " file & click open. A new window will appear as follows, showing empty Gnatt / Bar Chart.

**DISPLAY / ADDITION / DELETION OF GNATT CHART**

Project No : 8912

Project : Central AC Sys for Lab.

Date : 15/5/07

	Chapter / Item	Time in Months																							
		1	2	3	4	5	6	7	8	9	10	11	12	13	14	15	16	17	18	19	20	21	22	23	24
1	PIPING																								
2	VALVES																								
3	DUCTING																								
4	CHILLERS / CT																								
5	A H U																								
6	A C																								
7	DUCT HEATERS																								
8	FANS																								
9	AIR FILTERS																								
10	INSTRUMENT																								
11	PUMPS																								
12	BOILERS																								
13	FIRE FIGHTING																								
14	DRAINAGE																								
15	PLUMBING																								
16	BATH / LAUNDRY																								

Cash Flow / Material / Men : Distribution

Edit Bar Chart

Exit

Print

INSTRUMENTATION

PUMPS

BOILERS

FIRE FIGHTING

DRAINAGE

PLUMBING

BATH/LAUNDRY

PIPING

VALVES

DUCTING

CHILLERS

A H U

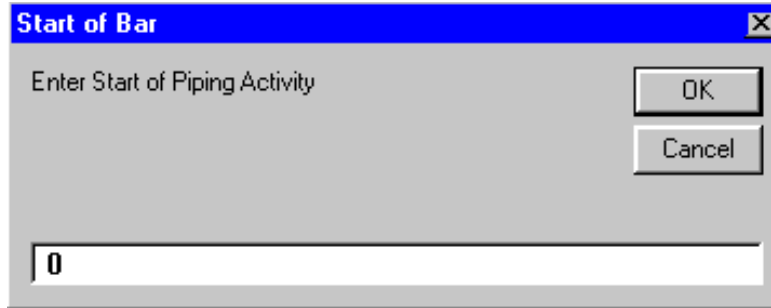
A C

DUCT HEATER

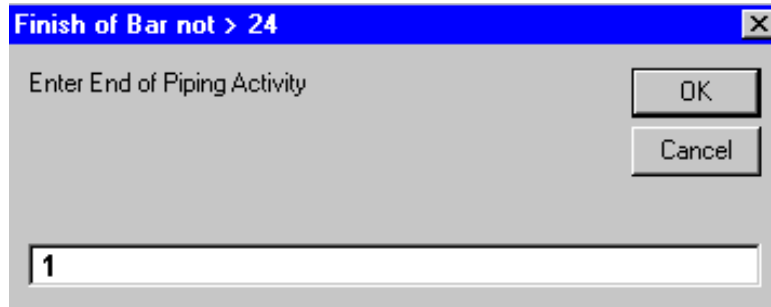
FANS

AIR FILTERS

- ▶ Now let us start constructing Gnatt / Bar Chart.  
Click " Piping " button situated at the left bottom corner of chart. The following window will appear asking for " Enter Start of Piping ". Type 0 & press " OK " .



- ▶ Again a new window will appear asking for " Enter End of Piping ". Type 1 & press " OK ". This window is displayed as under.



- ▶ Now you will see a RED BAR is displayed between 0 and 1 on the " Piping " ROW.  
Similarly you can prepare the complete GNATT / BAR CHART by clicking various activity buttons such as Valves, Ducting, AHU etc.... I have completed the BAR CHART for the whole project as follows.



	Chapter / Item	Time in Months																							
		1	2	3	4	5	6	7	8	9	10	11	12	13	14	15	16	17	18	19	20	21	22	23	24
1	PIPING	■																							
2	VALVES		■																						
3	DUCTING			■																					
4	CHILLERS / CT				■																				
5	A H U					■																			
6	A C						■																		
7	DUCT HEATERS							■																	
8	FANS								■																
9	AIR FILTERS									■															
10	INSTRUMENT										■														
11	PUMPS											■													
12	BOILERS												■												
13	FIRE FIGHTING													■											
14	DRAINAGE														■										
15	PLUMBING															■									
16	BATH / LAUNDRY																■								

Cash Flow / Material / Men : Distribution

Edit Bar Chart

Exit

Print

INSTRUMENTATION

PUMPS

BOILERS

FIRE FIGHTING

DRAINAGE

PLUMBING

BATH/LAUNDRY

PIPING

VALVES

DUCTING

CHILLERS

A H U

A C

DUCT HEATER

FANS

AIR FILTERS

▶ In case you have made any mistake or wants to change the Bar Chart, just click " Edit Bar Chart " button. Following window will appear.

### EDIT/DELETION OF BARS

Section	Item	Bar_Start	Bar_End
1	PIPING	0	1
10	INSTRUMENTATI...	9	10
11	PUMPS	10	11
12	BOILERS	11	12
13	FIRE FIGHTING	12	13
14	DRAINAGE	13	14
15	PLUMBING	14	16
16	BATH / LAUNDRY	17	20
2	VALVES	1	2
3	DUCTING	2	3
4	CHILLERS	3	4
5	AHU	4	5
6	A C	5	6
7	DUCT HEATERS	6	7
8	FANS	7	8
9	AIR FILTERS	8	9

Edit Bar Start :  Edit Bar End :

- ▶ Just Edit Bar Start or Edit Bar End and click on UPDATE button to register changes. Note that bar end should always be greater than bar start. If you want to delete any activity, (BAR) just take mouse to that ROW & click (select) and press the " REMOVE " button. Now you will notice that the selected activity has disappeared from this edit menu as well as the corresponding RED BAR has also been removed from the BAR CHART. Click Exit.

- ▶ Click on the " Cash Flow / Material / Men distribution : " Button to display these parameters. A new window will appear as shown in following 3 nos. of graphics.

## COST DISTRIBUTION / CUMULATIVE CASH FLOW :

Organization : Super Civil CD

Client : y. a. agbaotawala

Project : Central AC Sys for Lab.

Project No : 8912

Structure ID : Lab Building

Date : 15/5/07

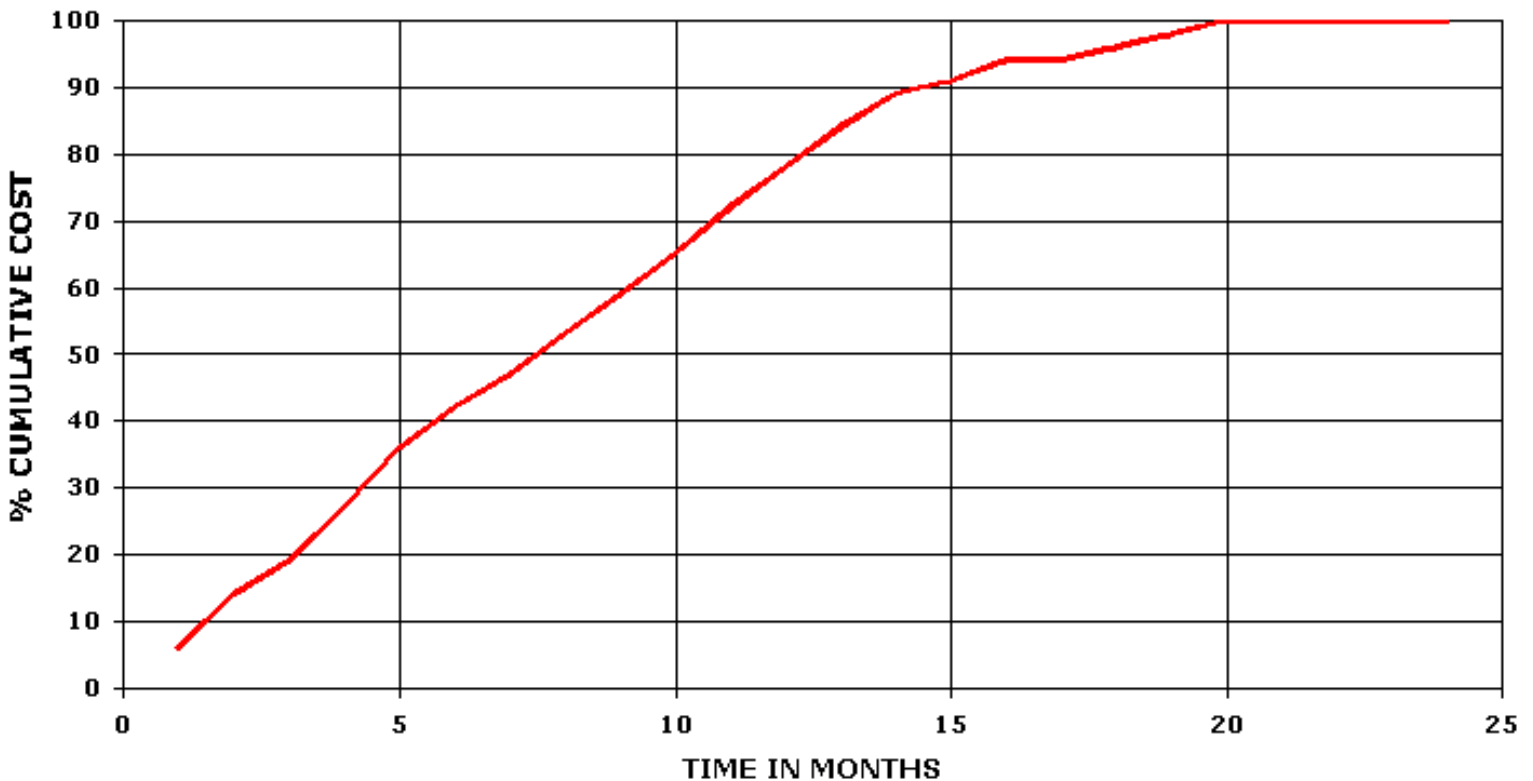
Month	1	2	3	4	5	6	7	8
<b>Value</b>	<b>14880</b>	<b>16368</b>	<b>12276</b>	<b>16368</b>	<b>19592</b>	<b>13640</b>	<b>10230</b>	<b>12276</b>
% Cumulative	6	14	19	27	36	42	47	53
Over Head	1200	1320	990	1320	1580	1100	825	990
Tax	480	528	396	528	632	440	330	396
Profit	1200	1320	990	1320	1580	1100	825	990
Skill Lab - No	1.25	1.5	1.12	1.5	1	1.25	0.93	1.12
Unskill Lab - ...	3.47	4.16	3.12	4.16	2.77	3.47	2.6	3.12
Foreman - No	0.17	0.21	0.16	0.21	0.14	0.17	0.13	0.16
Cash Param...								
Cost	13680	15048	11286	15048	18012	12540	9404.99	11286
Labour Cost	996.6	1197.3	897.6	1197.3	797.6	996.6	746	897.6
Material + O...	12683.4	13850.7	10388.4	13850.7	17214.4	11543.4	8658.99	10388.4
Adv. Recovery	0	1488	1636.8	1227.6	1636.8	1959.2	1364	1023
SD Recovery	0	1488	1636.8	1227.6	1636.8	1959.2	1364	1023
<b>Cash Flow</b>	<b>20790.19</b>	<b>18813.49</b>	<b>17159.59</b>	<b>15394.69</b>	<b>13840.79</b>	<b>11303.38</b>	<b>9925.98</b>	<b>8553.39</b>

9	10	11	12	13	14	15	16	17
<b>13764</b>	<b>13764</b>	<b>13950</b>	<b>14260</b>	<b>12276</b>	<b>10912</b>	<b>5456</b>	<b>5456</b>	<b>0</b>
59	65	72	78	84	89	91	94	94
1110	1110	1125	1150	990	880	440	440	0
444	444	450	460	396	352	176	176	0
1110	1110	1125	1150	990	880	440	440	0
1.37	1.37	1.56	1.87	1.12	1	0.5	0.5	0
3.81	3.81	4.34	5.2	3.12	2.77	1.38	1.38	0
0.19	0.19	0.22	0.26	0.16	0.14	0.07	0.07	0
12654	12654	12825	13110	11286	10031.99	5016	5016	0
1094.79	1094.8	1248.2	1494.5	897.6	797.6	397.9	397.9	0
11559.21	11559.2	11576.79	11615.5	10388.4	9234.39	4618.1	4618.1	0
1227.6	1376.4	1376.4	1395	1426	1227.6	1091.2	545.6	545.6
1227.6	1376.4	1376.4	1395	1426	1227.6	1091.2	545.6	545.6
6890.99	5248.18	3451.98	1540.68	435.58	-929.63	-1832.33	-2483.54	-2736.85

18	19	20	21	22	23	24	Total
4133.33	4133.33	4133.33	0	0	0	0	217867.99
96	98	100	100	100	100	100	100
333.33	333.33	333.33	0	0	0	0	17569.99
133.33	133.33	133.33	0	0	0	0	7027.99
333.33	333.33	333.33	0	0	0	0	17569.99
1.25	1.25	1.25	0	0	0	0	22
3.47	3.47	3.47	0	0	0	0	63
0.17	0.17	0.17	0	0	0	0	3
3799.99	3799.99	3799.99	0	0	0	0	200297.99
996.6	996.6	996.6	0	0	0	0	18139.7
2803.39	2803.39	2803.39	0	0	0	0	182158.28
0	413.33	413.33	413.33	0	0	0	21786.79
0	413.33	413.33	413.33	0	0	0	21786.79
-3733.45	-4226.77	-4720.09	17569.97	0	0	0	17569.97

- ▶ The project duration of maximum of 24 months is allowed at a time. Note that Cash Flow / Material / Men distribution is entirely dependent on Gantt Chart. If you prepare a Bar Chart of 12 months duration & only few required activities then Cash Flow / Material / Men distribution will correspond to 12 months duration & those selected activities.
- ▶ Lastly Click on the " S CURVE " button. The " S CURVE " will be displayed as under.

## S CURVE



- ▶ Click EXIT " 3 " times to return to main menu.

STEP NO. 12 IS OVER.

**OTHER SOFTWARES:**

**SUPER CIVIL CD** - Single Point Solution To Your Civil Engineering Needs

**SUPER RATE ANALYSIS** - Rate Analysis Of 1299 Nos. Of Civil Engineering Items

**2D FRAME ANALYSIS** - Discover The Beauty Of Structural Analysis

**R C F** - A Software for Analysis, Design, Estimation & Costing of RCC Floors

**S S F** - Analysis, Design, Estimation & Costing of Steel Buildings, revised as per IS 800 : 2007

**Q T Y** - Quantity Estimation & Cost, Project Control

**SUPER REAL VALUATION** - A Software For Immovable Properties

**ROADS** - Pavement Design & Rate Analysis Of Road Items

**ROAD ESTIMATE** - Quantity Estimation & Cost, Project Control For Road

**ELECTRIC COST** - Costing, Project Control & MDS For Electrical Projects

**HVAC COST** - Costing, Project Control & Design For HVAC Engineers

**BILLING JI** - A Database Management Software For General Billing

**RA BILL** - A Database Management Software For Item Rate Contract Billing

**BUILDERS BILL** - A Database Management Software for Billing of Lump sum Contracts

**BID ANALYSIS** - A Software For Technical & Commercial Tender Analysis

**RAFT FOUNDATION** - Analysis, Design, Estimation, Costing & Drawing of RCC Raft Foundation

**STEEL 2007** - Limit State design of Steel as per IS 800 : 2007

**SITE CONTROL** - A Management Software for Resource Control At Site.

**DESIGN & DRAWING CONTROL** - A DBM Software for Control of Design & Drawing Manhours.

**COMPOSITE** - A Software for Analysis, Design, Costing & Drawing of Composite Floor Buildings

**INSTA COST** - A Software for Estimating Project Cost & Tender SOQ Instantly

**FLAT SLAB** - A Software for Analysis, Design, Estimation, Costing & Drawings of Flat Slabs

**FLAT RAFT** - A Software for Analysis, Design, Estimation, Costing & Drawings of Rigid RCC Flat Rafts

**OPTIMIZE BAR** - A Software for Optimization of Reinforcements from Existing Bar Bending Schedule

**OPTIMIZE STEEL** - A Software for Optimization of Steel Sections from Existing Fabrication Drawing

**AutoQty** - A Software for Automatic Quantity & Cost Estimation from AutoCAD Drawings